

LA FRACTURE

TECHNICAL RIDER / JULY 2023

CONTACTS

—

Ad Lib

Production, Diffusion, Développement - Support d'artistes

contact@adlibdiffusion.be / +32 (0)477 49 89 19

www.adlibdiffusion.be

—

Leïla Di Gregorio

Production Manager until Dec.2023

Little Big Horn asbl

littlebighornasbl@gmail.com / +32 (0)4 94 63 95 84

—

Samy Barras

Technical manager / light and video manager

samy.barras@gmail.com / +33 (0)6 89 98 78 56

—

Yasmine Yahiatene

Création / performance

yasmineyahiatene@gmail.com / +32 (0)4 83 59 72 04

a.210



PIANOFABRIEK
CITYLAB

BUDA
KUNSTENCENTRUM

KAMI
THEATER



DARNA
Een open huis



SHOW GENERAL DESCRIPTION

"It's the story of a father vanishing, disappearing because of alcohol dependency. It relates the path toward forgiveness, toward the resilience of abandoned relative. It is a story about disease acceptance and trauma understanding. The performance tells this path. The performance is this path." [Yasmine Yahiatene, janvier 2022]

Type : Performance

Duration : 55 minutes

Team :

1 actress + 1 set assistant

1 general manager (stage / vidéo / lumière) + 1 sound manager

1 production manager



INFORMATIONS

In instance to organize our coming, we ask you to give us as as soon as possible the following details :

- theater / venue address and vehicle access details (unloading and parking)
- contact of theater's technical manager / regisseur
- a technical documentation of the theater including list of materials, detailed dimensioned plans (top and side view)

→ Once these documentations are received we will be able to send you a technical documentation adapted and dimensioned to your venue.

Stage requirements :

- front width : 11 meters
- depth : 9 meters
- hauteur sous gril / gril height : > 6 meters

Audience positioning : frontal with first row of seats at stage level

Optional : adding cushions on the floor to let people seat closer to the performance.

We ask for a light pre-built made before our arrival, to be sure all technical builds will fit in the proposed schedule.

Control desk positioning :

△ The maximum distance between the center of the stage and the control desk (light and video) should not be longer than 20 meters, due to maximum distance between cameras and computer.

Parking :

Please provide free parking facility for a van type *Volkswagen Crafter 35 L4H3 2.0 TDI13* or *Peugeot Expert Standard*.

SCHEDULE TEMPLATE

(J-1) Arrival / assembly :

Venue team :

- 1 stage manager
- 1 light technician
- 1 video technician
- 1 sound technician

Schedule :

- 09h00 - 10h00 : on site arrival, unloading, venue tour
- 10h00 - 13h00 : assembling (light, sound, video)
- 13h00 - 14h00 : Lunch Break
- 14h00 - 18h00 : Focus light, sound check, rehearsal

(J-0) Performance day :

Venue team :

- 2 light technicians
- 1 vidéo technician
- 1 sound technician

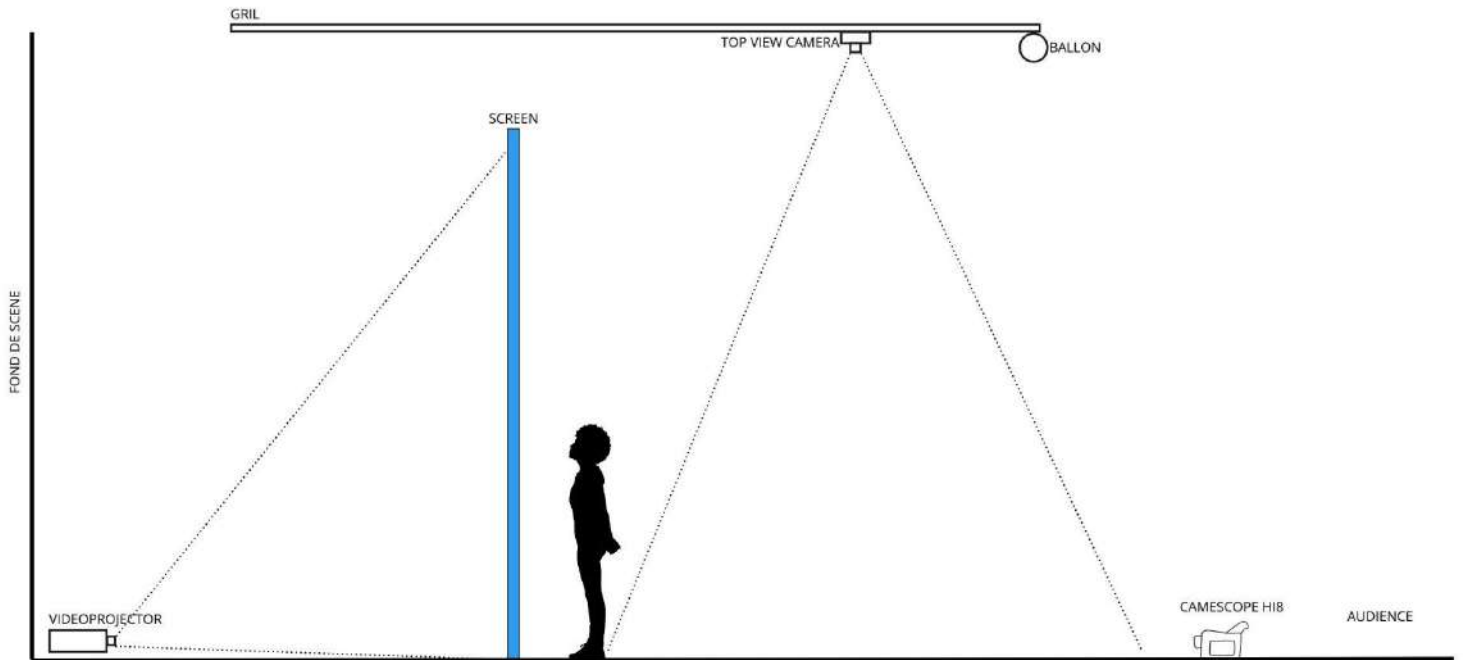
Horaires

- 09h30 - 12h30 : End of light focusing, final sound check, stage cleaning
- 12h30 - 13h30 : Lunch break
- 13h30 - 17h30 : technical rehearsal + generale.
→ performance during the evening

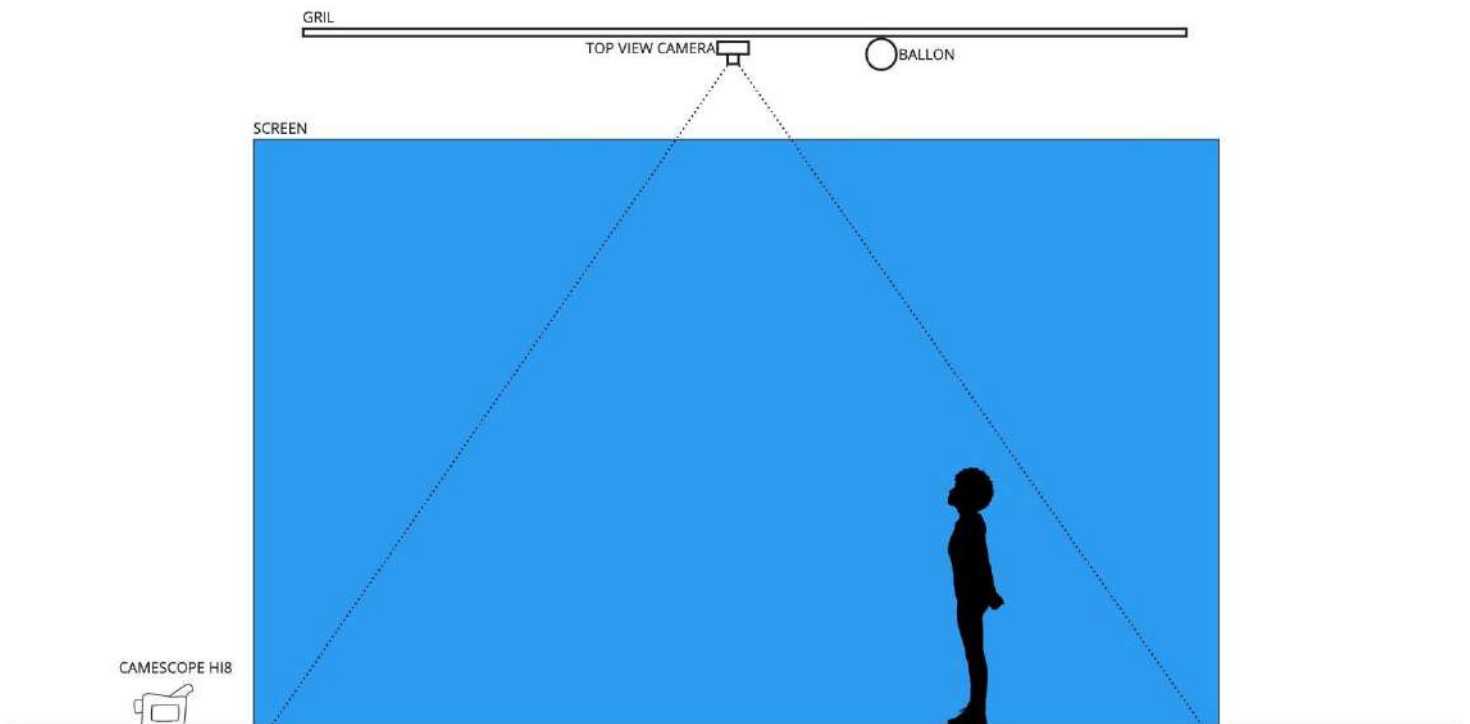


SCHEMATIC VIEWS

SIDE



FRONT



STAGE & SET NEEDS

What we bring (can be discussed depending of transport costs) :

- Handycam camera + tripod + HI8 tapes (see video part details)
- Kimex retroprojection screen (see video part details)
- White pens (watercolor paint)
- football

What you have to supply :

- Black dancing mat covering the whole surface of the stage
- the football is hanged on the grill and we need a dropping system like kabuki or electromagnet to be controlled from control desk
- Costume laundry : Yasmine is wearing sportswear that needs to be cleaned after every show and rehearsals. The laundry can be done using a washing machine with a standard program (30°C) and open air dried or using machine drying.
→ can you supply staff or material (machine + washing liquid) to do so ?
- Optional : adding cushions on the floor to let people seat closer to the performance.

⚠ Yasmine is drawing directly on the dancing mat with her watercolor pencil. We need the stage to be cleaned after each rehearsal and performance. **The painting has to be cleaned using only hot water. The use of adjuvants (white vinegar, soap) may result in damages to the dancing mat covering.**

LIGHTS NEEDS

What we bring :

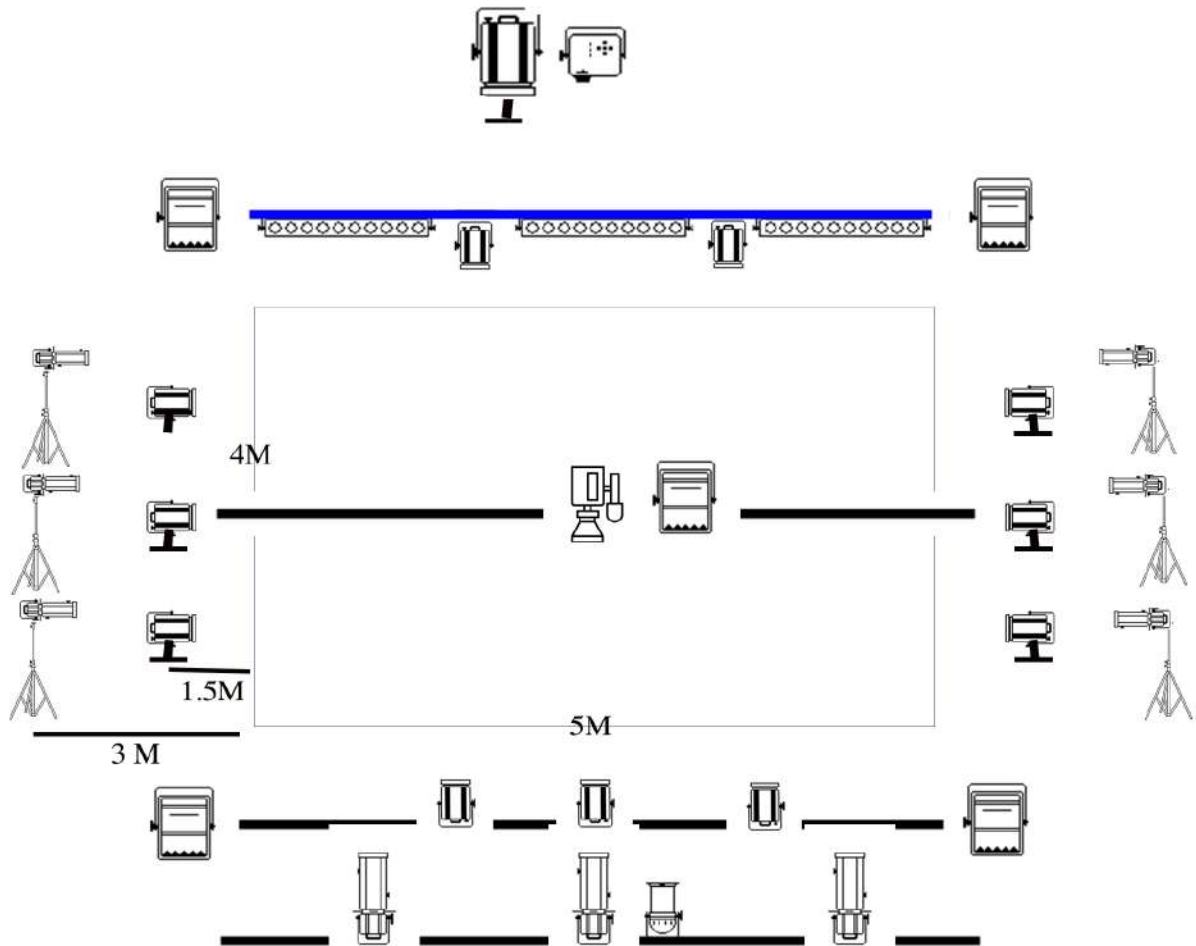
- ENTTEC DMX USB Pro → light control using Millumin software (régie vidéo)

What you have to supply (a detailed light map adapted to your venue will be given) :

- 1 x PC 2KW sur platine **281**
- 11 x PC 1KW (6 on feets) **281**
- 6 x Profiles 750W + feets **281**
- 3 x Profiles 1000W **281**
- 1 x PAR 61 **281**
- 5 x Horiziodes **281**
- 3 x Sunstripes (actives)

All lights must be provided with filters n°281, except the 3 Sunstripes.

PLAN FEU SCHEMATIQUE



 écran 4m x 5M



1x VP focal entre 0,3 :1et 0.8:1, min 3500 lumens , HD

281



1 x PC 2KW sur platine

281



1x PAR 61

281



6 x Découpes 750W + pieds



3 x Sunstripes

281



11 x PC 1KW (6 sur platines)

281



3 x Découpes 1000X

281



5 x Horiziodes

SOUND NEEDS

What we bring :

- 1 computer
- 1 audio hardware with 4 jack 6,35 output
- 1 launchpad Novation Pro mk3
- 1 midi controller (nanokontrol)
- 1 système micro cravate HF 863.100 / 863.700 / 864.100 ou 864.900 MHz
- 1 adapter mini jack/jack 6,35 stéréo (vidéo computer <->mixing board)

What you have to supply :

- Mixing board (6 input mini / 2 Aux / Mon)
- Venue Stereo face system + Sub
- 2 speakers + separated aux channels (type Yamaha DBR 10, Qsc K10,...)
- 4 wires Jack 6,35 mono (Audio interface > mixing board)
- 1 XLR from control desk to stage (HF receiver > Audio interface) + alim
- small light for control desk

VIDEO NEEDS

What we bring :

- 1 computer (macbook pro retina 15 pouces)
- 1 caméra "top view" (Canon XF100E)
- 1 rigging system for "top view" camera, adapted to Ø60 tubes
- 1 caméra "stage" to be manipulated by Yasmine (Sony Handycam CCD-TRV208E)
- 1 camera tripod
- 1 Blackmagic Atem MiniPro Iso
- 1 AJA U-TAP (HDMI to USB converter)
- 1 MISOTT (RCA+S-Video to HDMI Converter)
- 3 HDMI optical fiber wires (25m, 30m, 30m)
- 2 S-Video 10m wires
- 1 screen Kimex 5m x 4m suitable for retroprojection + metal frame
- 3 ethernet wires cat 6 L.1m + HUB ethernet
- optional : 1 beamer BenQ MW855UST (WXGA, DLP, 3500 Lumens, f 0.35:1)

What you have to supply :

- 1 beamer 5000 Lumens ANSI mini + adapted lens
- 1 connection from beamer to control desk (ex : HDMI, BNC + Blackmagic, etc)
- beamer's shutter control (PJLink protocol + ethernet wiring for example)
- small light for control desk

NOTE

To avoid any problem or misunderstanding at our arrival, please do not hesitate to come back to us if you have any issue or question about this general documentation.

This documentation stands for ideal conditions of representation. It is adaptable by mutual agreement depending on your venue and available materials.

This general technical documentation and all appendices are an integral part of the contract.



THANKS :)