

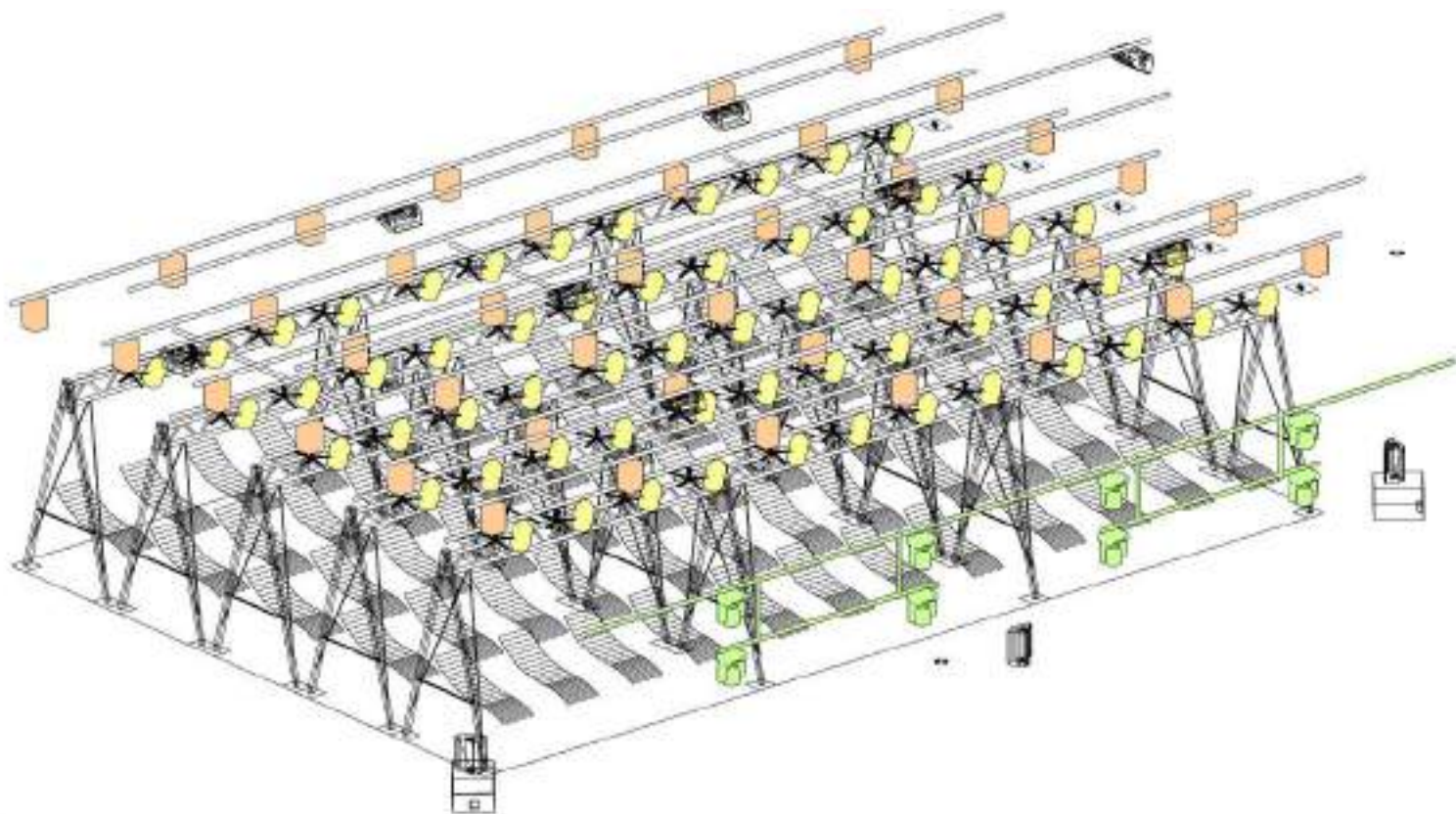
JE SUIS UNE MONTAGNE

I AM A MOUNTAIN

Eric Arnal-Burtschy

TECHNICAL RIDER

V5.2 - May 27, 2025



Large Version 15x10 meters

60 seats

(maximum capacity per performance)

Minimum stage dimensions:

15.50 m (width) x 10.35 m (depth)
(size of the structure)

16 meters of batten width

Ideal playing area dimensions:

18 m (width) x 13 m (depth)

Small Version 10x10 meters

40 seats

(maximum capacity per performance)

Minimum stage dimensions:

10,44 m (largeur) x 10,35 m (profondeur)
(size of the structure)

11 meters of batten width

Ideal playing area dimensions:

13 m (width) x 13 m (depth)

Technical Direction :

Christophe VAN HOVE

+32 476 71 04 72

cvanhove.regie@me.com

JE SUIS UNE MONTAGNE

Eric Arnal-Burtschy

Synopsis :

« Je suis une montagne » is a performance where the audience is on stage. Spectators are invited to sit in "floating deckchairs" suspended by metal slings from a self-supporting, swing-like structure.

Once plunged into complete darkness, with eyes closed and comfortably seated, the spectators will be transported into different atmospheres appealing to their senses: heat, cold, wind, drizzle, storm, light, silence, and noise...



For the success of these atmospheres, various techniques are used, and it is essential to respect them scrupulously (complete darkness, multi-channel sound...).

A large and a small version are available to adapt to the size of your stage. 60 deckchairs for the large 15x10 meter version, 40 deckchairs for the small 10x10 meter version. Intermediate formats are also possible.

Part of the equipment is provided by the company (structure, fans, wash lights, sound and lighting control...) and the other part by the theater (traditional lighting fixtures, audio diffusion...).

The setup of lights and sound is preferable in a hall equipped with motorized battens. In the case of a fixed grid, sub-hanging will be necessary.

8 speakers on the grid and 6 speakers on the floor are essential to produce spatialized sound.

Transportation :

The company's equipment is transported by heavy goods vehicle, likely a semi-trailer truck. If this option poses a problem in terms of access and unloading, please contact us.

All equipment is packed on dollies or in boxes on wheels, or possibly on pallets, all loaded flat. No heavy lifting is required for unloading.

A pallet truck is necessary throughout the entire setup and dismantling period.

Drapes :

No drapes are necessary.

Dance Floor :

As drizzle and water droplets will be diffused onto the stage, it is essential that the stage is equipped with a black dance floor with recently applied dance floor tape. This floor must extend beyond the footprint of our supporting structure.

Complete Darkness :

Spectators must be plunged into total darkness. No stray light sources are accepted. The theater must mask the indicator lights of emergency lighting units. This allows the emergency lighting units to function normally in case of problems or evacuation while ensuring that they emit no passive light, including residual light. A switch must also be provided within reach of the technician operating the show and another next to the usher present in the hall to be able to turn on the light immediately if needed.

Compensatory measures proposed to address the masking of emergency lighting: human presence via the 2 or 3 ushers of the venue, the venue's on-call technician, a person from the company, resulting in a ratio of 1 accompanying person for 12 spectators.

Hanging Logic :

The deckchairs for the audience as well as our rain and vibration (bass shakers) systems are attached to our structure.

The PARs and fans are attached to the theater's battens at 3.5m from the floor.

The PCs are attached to the theater's battens at 4m from the floor.

The sound system is attached to the theater's battens at 5m from the floor, except for the speakers placed on the ground.

Note that equipping the battens during setup requires a very large quantity of rigging hardware (pipe clamps / Velcro / ...).

Self-Supporting Structure :

This modular structure must be installed on the stage, which must have minimum dimensions of:

Large version:

15.50 m (width) x 10.35 m (depth)
(size of the structure)

Small version:

10.44 m (width) x 10.35 m (depth)
(size of the structure)

Composed of 15 independent modules, the structure is provided by the company and can be adapted in its layout depending on the venue.

The deckchairs are hung by slings from a 2-point structure (2.5m American bars). The design of this structure was carried out by a specialized structural engineering firm: BAS bvba.

The grounding of this structure must be ensured by the theater. The feet of the structure are made of steel, and the horizontal connecting elements are made of aluminum.

Equipment on the Structure :

Drizzle :

The structure is equipped with misting nozzles. These diffuse a small volume of water, but it will be necessary to dry the stage between each performance using a squeegee and a wet vacuum cleaner provided by the company.

A floor scrubber-dryer can also be used to collect the water.

All piping and machinery (pumps, solenoid valves, etc.) are provided by the company.

The drizzle system is not directly connected to the mains water supply but draws water from 20L containers (one per circuit, 3 circuits) provided by the company. A water inlet must be available near the stage, either with a Gardena connector or with a standard tap thread, to allow filling the containers every two performances using a hose that we attach to the tap.

Vibrators :

15 Bass shaker type vibrators will be installed on the structure. Their purpose is to make the spectator vibrate in their deckchair.

They are amplified by four power amplifiers that will be placed as far away from the spectators as possible (to avoid fan noise).

The complete kit (Bass shaker + amplifiers + speaker cabling) is provided by the company.

Heating PAR64s and Fans :

Above the 15 modules, at 3.50 meters, there are PAR64 CP61 (1000W) fixtures which, at certain moments in the show, will heat the torsos of the spectators.

It is impossible to replace these PAR64s with LED projectors, which would not fulfill this "heating" function. There is one batten per module and one PAR64 per spectator. These will be provided by the theater. They can be coupled.

Large version: 60 PAR64

Small version: 40 PAR64

Next to each PAR64 is a fan (45 cm diameter) per spectator. The fans are powered by a 230V "relay pack" which allows the fans to be activated via DMX.

The relay packs are powered by 16A direct feeds and 3-pin DMX. There is one per batten (provided by the company).

We provide the electrical cables to connect the fans to the relay packs (F Type plugs).

1kw PC Grid on Battens :

A "grid" of 1kw PCs (see layout plan) will be installed at a height between 4 meters (minimum) and 6 meters (maximum). On each batten, each PC will have a different circuit from 1 to 7 on the large version or from 1 to 5 on the small version.

Large version :

42 PCs, 7 PCs per batten, 6 battens

Small version :

30 PCs, 5 PCs per batten, 6 battens

Provide 1 dimmer = 1 PC

Alternatively, PCs can possibly be coupled to save dimmers, but only in the vertical axis: PC#1 batten 1 with PC#1 batten 2 for example.

The PCs must be precisely positioned on the grid to facilitate focusing.

Each PC will be top-mounted (in shower position), with the beam tightened to the maximum. Focusing will be done with a gobo, before the structure is assembled.

The 1kw PCs can possibly be replaced by LED equivalents, provided they can be controlled on a single DMX channel per unit.

Wash Moving Heads :

At the edge of the stage, at two different heights, 8 wash moving heads provided by the company are installed: Eurolite LED TMH-X4 Zoom Wash.

The hanging support, to be provided, can be stands, ladders, or front/under-stage battens loaded at 2.1m and 3m high relative to the stage level.

The **3-pin DMX** cabling and the 16A cabling will be provided by the theater.

Scent Diffusers :

Provided by the company. Two scents will be diffused during the performance. The stage will need to be ventilated as much as possible between each performance.

Control Booth Position :

It will ideally be located in a room directly adjacent to the stage, and failing that, far from the stage. A 2x1 meter table is sufficient. A 16A power supply and several power strips must be provided.

This control booth must be hidden from the audience's view when they are seated in the deckchairs.

Lighting Control:

We do not need a lighting console for operation. However, for setup, a lighting console can be used to test the circuits.

We use 2 "Enttec USB pro interface" DMX interfaces:

- 1 universe for your installation (dimmers) and the control of the relay packs. 5-pin DMX output.
- 1 universe for the edge-of-stage wash moving heads. 5-pin DMX output. 3-pin DMX adapter.

We need a DMX splitter to control our relay packs (if possible with 8x 3-pin DMX outputs) in addition to the one for your installation.

The lighting cues are hard-coded in the MAX MSP software, and a series of technical reasons prevent us from patching dimmer numbers higher than 249.

Please ensure that the connection of projectors and fans is made to lines linked to a number lower than 249; or provide a solution allowing higher numbers to be brought back into this patch range (e.g.: re-addressing dimmers, repatching through an intermediate console at the beginning of the DMX1 universe, ...).

Sound Control :

We have an audio interface connected to Ableton Live. It has 24 analog outputs, which will need to be connected directly to your amplifiers or powered speakers.

No sound console is needed.

Multi-Channel Sound System Installation:

To achieve maximum spatialized sound, a significant number of speakers are installed on the floor and on the battens. The theater will provide the equipment and install it during the pre-rigging. See the layout plan.

On the grid: 8 speakers hung on lyres + hooks
On the floor: 6 speakers on stands (1m-1.50m) + 2 subs

All speakers will be on separate amplification channels.

Ideally, we would like the same model for all speakers, or failing that, the set of 8 suspended speakers of one type, and the 6 floor speakers of another, forming a coherent system. Aware of the large number of speakers requested, if you need to use multiple models, consistency in the installation will be necessary.

Example of possible references for point source speakers: L Acoustics X8, X12, D&B E8, E12...

Example of possible references for subs: L Acoustics SB18, D&B B4, Y sub... ideally 18" subs

The theater will provide the cabling to go from the control booth to the amplifiers or powered speakers.

Electrical Requirements :

Equipment we provide	Amperage	Quantity	Comment
Relay pack	8A max. par relay pack (230V)	5	1x 16A per batten equipped with fans
Bass shaker amps	5A per amplifier (230V)	4	2x true 16A direct feeds at the amplifier rack
Wash Moving Heads	1A per unit (230V)	8	1x 16A at the edge of the stage
Control Booth	Very little	1	1x 16A and several power strips

Storage and Access :

A space must be provided to store the empty equipment transport dollies during the performances. The necessary floor space is approximately 20m². The items to be stored are:

- dolly for structures — 300 x 130 x 25 cm
- dolly for structures — 300 x 110 x 25 cm
- basket for American bars — 270 x 80 x 200 cm
- dolly for fans (2x) — 120 x 72 x 210 cm
- dolly for fans — 180 x 72 x 200 cm
- case for drizzle system — 153 x 103 x 104 cm
- rack for deckchairs (3x, stackable) — 140 x 75 x 40 cm
- tool case — 122 x 60 x 72 cm
- tool case — 122 x 60 x 102 cm
- flight case (2x) — 120 x 60 x 72 cm
- flight case (3x, stackable) — 80 x 60 x 60 cm

Please ensure that the access to the hall allows these dollies to be brought to the stage.

Audience Reception :

An explanation, preparation, and installation period first takes place with an usher. The audience sits in the auditorium seating and is informed about the show (see audience reception protocol).

In the context of school performances, a strobe test on the auditorium side is necessary to identify any undiagnosed sensitivities. A strobe or a projector allowing strobe effects must be installed on a stand at the edge of the stage and be operable from this location (provided by the theater).

Following this information session, the audience is invited to equip themselves with protective equipment if they wish. This includes rain capes, sunglasses, fabric towels, etc. A table of at least 1.5m x 0.8m (ideally a platform) as well as 2 clothes racks equipped with hangers (40 or 60 pcs) are necessary at the foot of the auditorium seating to place this protective equipment. Lighting must also be provided on the auditorium side to illuminate the usher during their presentation as well as the protective equipment. The protective equipment is provided by the company, with the exception of earplugs provided by the theater.

We need one chair at each corner of the stage for the ushers to position themselves during the performances.

For the maintenance of the fabric towels offered to the audience, access to a washing machine and a dryer are necessary from D-1 onwards.

Performance Duration :

The duration of the show announced to the public is 1 hour 30 minutes.

The audience then spends approximately 1 hour on stage.

A performance can take place every 1 hour 30 minutes, which allows time to reset: dry the stage and seats...

Summary of Equipment Provided by the Company :

Equipment	Large version	Small version
Structure	15x10 meter kit, 5 modules of 15m	10x10 meter kit, 5 modules of 10m
Number of Deckchairs	60	40
Fans	60 fans + 5 relay packs	40 fans + 5 relay packs
Drizzle Kit	Complete kit + 25m hose + 1 relay pack	Complete kit + 25m hose + 1 relay pack
Bass Shakers	Complete kit 15 Bass shakers	Complete kit 15 Bass shakers
Wash Moving Heads	Kit of 8 wash moving heads	Kit of 8 wash moving heads
Scent Diffuser	3	3
Sound and Light Control	1	1

Summary of Equipment Provided by the Theater:

Equipment	Large Version	Small Version
Structure Grounding	Equipotential bonding	Equipotential bonding
PAR64, coupled	60	40
1KW PCs, separate circuits	42	30
Wash Moving Head Rigging	Ladders or batten and sub-batten at stage edge	Ladders or batten and sub-batten at stage edge
16A Cabling	Kit	Kit
3-pin and 5-pin DMX Cabling	Relay packs and wash lights are 3-pin	Relay packs and wash lights are 3-pin
DMX Splitters (+ yours)	1 splitter 8 outputs 3-pin	1 splitter 8 outputs 3-pin
Point Source Speakers (Hanging)	8	8
Point Source Speakers (Floor)	6	6
Subs (type 1x18")	2	2
Water Inlet	Max. 25 meters from stage	Max. 25 meters from stage

Personnel Requirements and Provisional Schedule :

Attention: The stage crew (stage manager + stagehands) must be the same for the setup (D-2, D-1) and the dismantling. Technical interns are not included in the following count.

D-X :

- Delivery of the company's equipment by a conventional carrier. 3 theater technicians must be present for unloading.

D-2 :

Full Day (8 hours):

- Arrival of the company's technicians
- Setup of lighting and sound kits
- Installation of fans and relay packs on the PAR64 battens
- Control booth installation, testing, and verification of lighting and sound patches
- Pre-focus of PCs, aiming and verification of speakers on the grid
- Installation and patching of floor speakers
- Arrangement of audience reception (steps to the stage, etc.) and peripheral equipment for the show (water pumps, etc.)

Sound Technician	Light Technician	Stage Technician	Stagehand
2	3	1	1

Company Technician (TBC)	Artist (TBC)
2	1

D-1 :

Full Day (8 hours) :

- Assembly of the supporting structure modules
- Installation of audience reception lighting
- Installation of machinery on the modules: rain and drizzle diffusion system, Bass shakers, deckchair heating
- Installation of wash moving heads in the auditorium (company kit)
- Lighting focus
- Stage and cable cleanup
- Tests, finalization of the installation

Sound Technician	Light Technician	Stage Technician	Stagehand
1	2x a.m. — 4x p.m.	1	4

Company Technician (TBC)	Artist (TBC)
2	1

Operation :

- We need 2 ushers (3 for the large version) to welcome the audience, explain how the show works, guide people, and help them get settled.
- We need a general stage manager who knows the venue perfectly, can turn on the sound and lighting configuration, and troubleshoot it if needed.
- They will also know the electrical installation, service lights, emergency lighting if needed, and will ensure technical on-call duty.
- One stagehand will help us during the resets to dry the stage and will also be present with the ushers for audience reception.

Stage Manager	Stagehand	Ushers
1	1	2 or 3

Company Technician (TBC)	Artist (TBC)
1	1

Dismantling :

- A 4-hour shift should be planned.

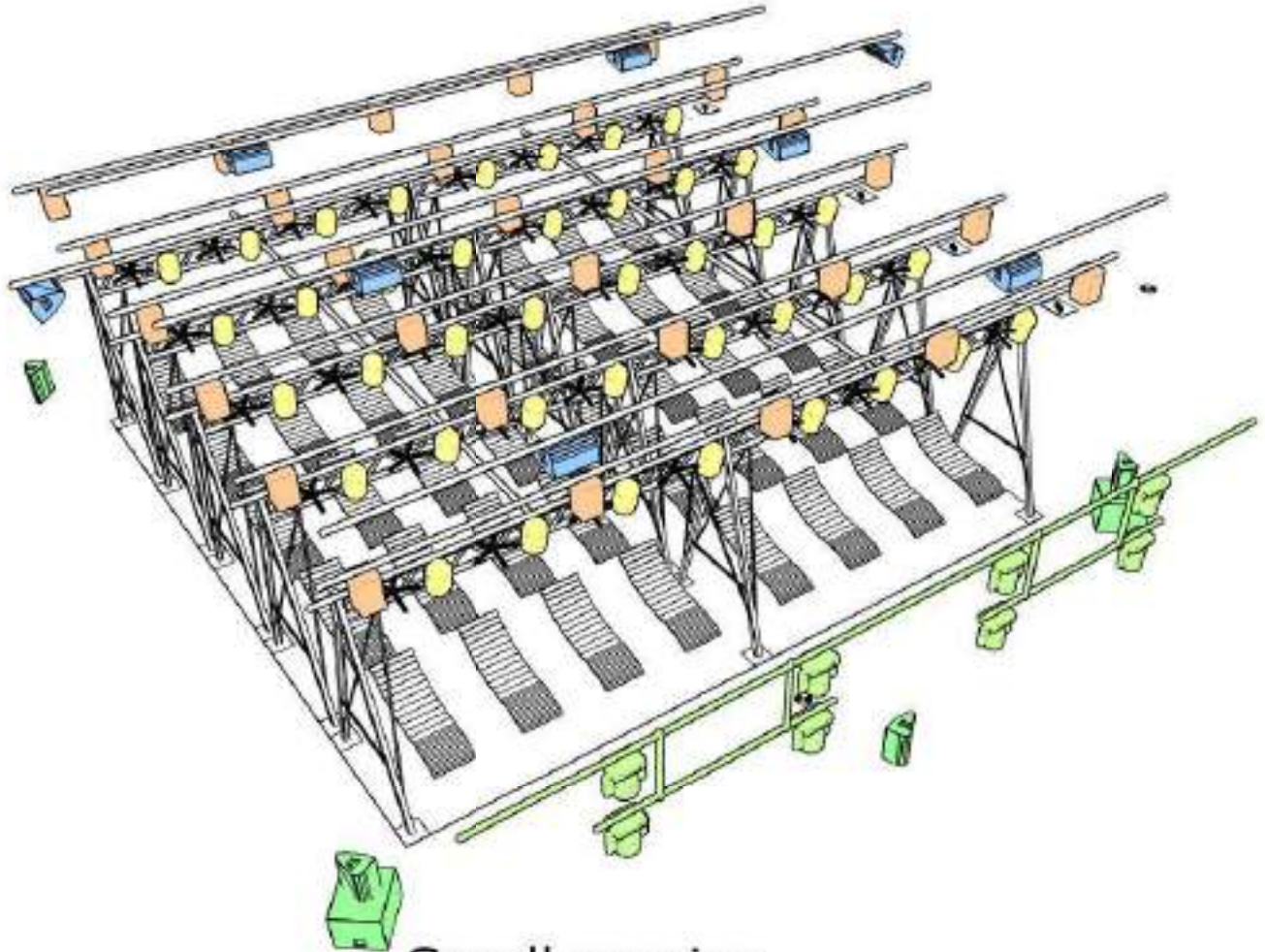
Sound Technician	Light Technician	Stage Technician	Stagehand
1	2	1	4

Company Technician (TBC)	Artist (TBC)
2	1

D+X :

- Collection of the company's equipment by a conventional carrier. 3 theater technicians must be present for loading.

Setup plan



Small version

40 seats

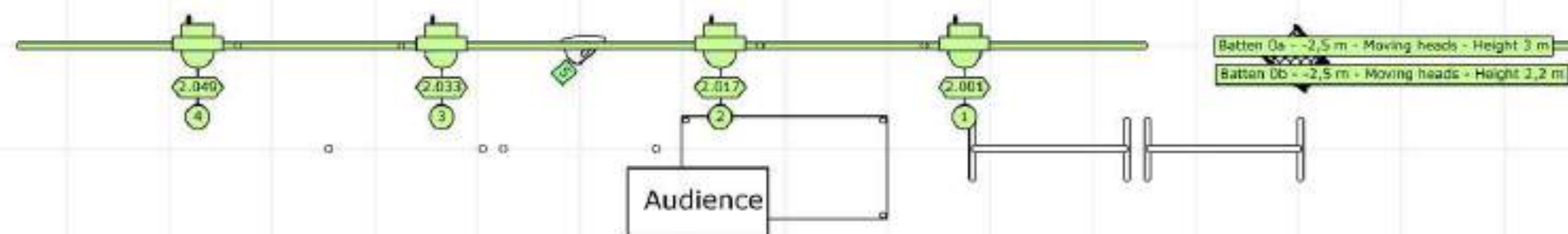
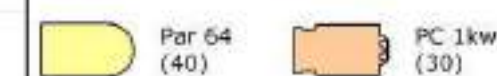
Minimal stage dimensions :
10,44 m (width) x 10,35 m (depth)
(structure dimension)

11 m battens width

Optimal dimensions :
13 m (width) x 13 m (depth)

Projet	JE SUIS UNE MONTAGNE - Eric Arnal-Burtschy
Nom du projet et version	TECHNICAL SETUP - V4
Directeur technique	C. VAN HOVE - cvanhove.regie@me.com - +32 476 71 04 72





Sectional plan

Projet: JE SUIS UNE MONTAGNE - Eric Amal-Burtschy

Lieu du projet et version:

TECHNICAL SETUP - V4

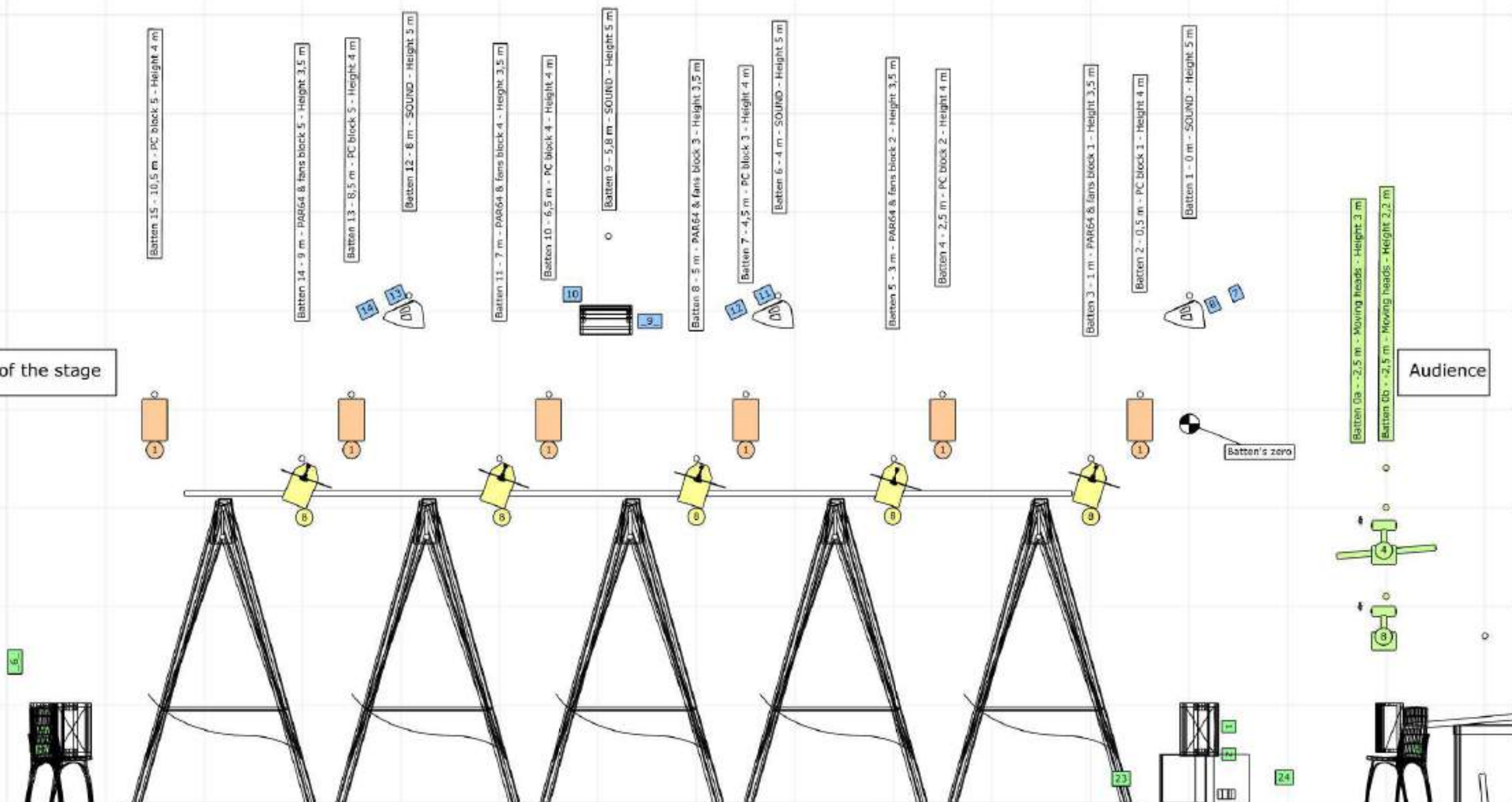
Directeur technique:

C. VAN HOVE - cvanhove.regie@me.com - +32 476 71 04 72



Back of the stage

Audience



Par 64 (40) PC 1kw (30)

Sound setup

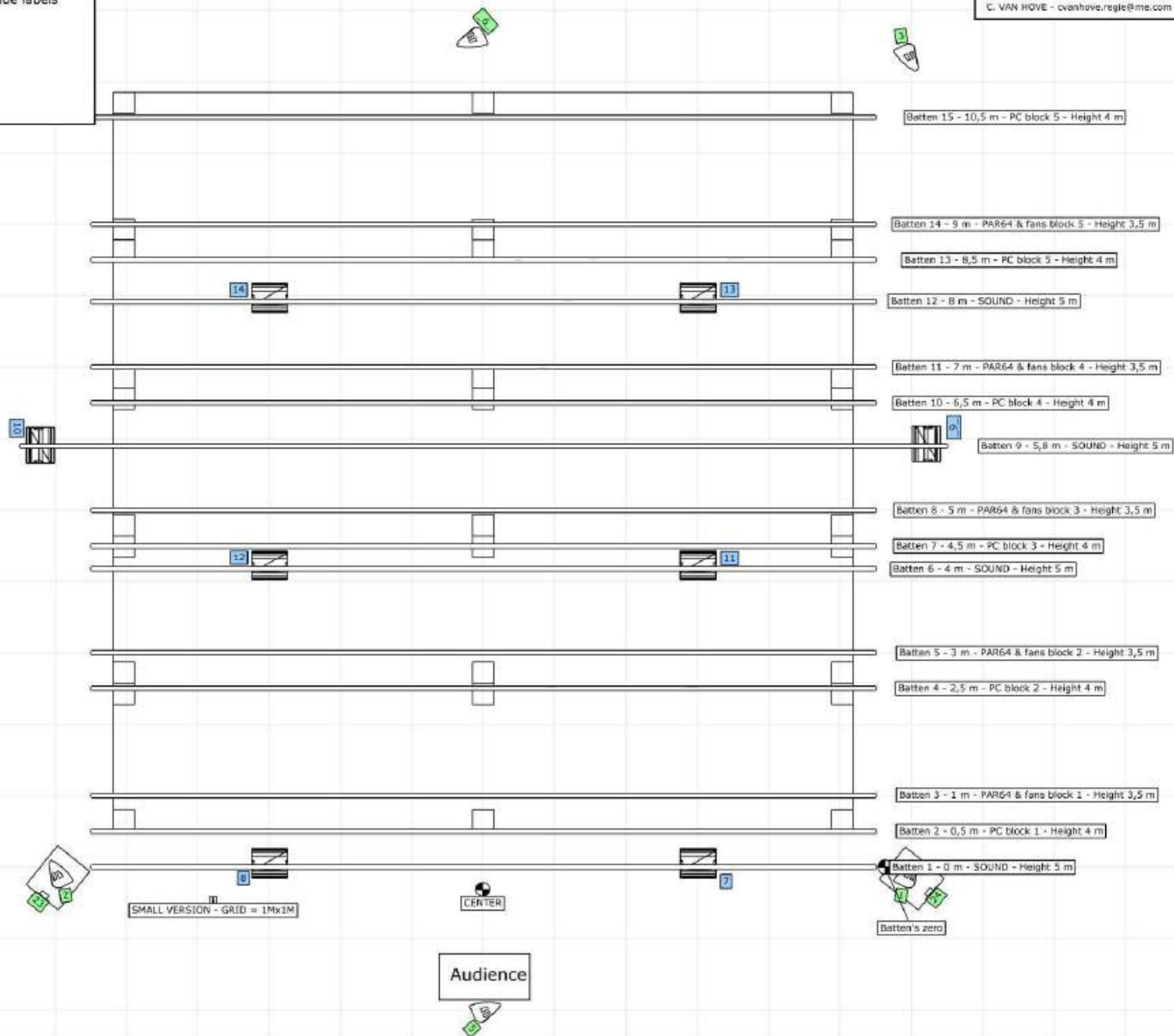
Floor speakers - Green labels
Hanged speakers - Blue labels

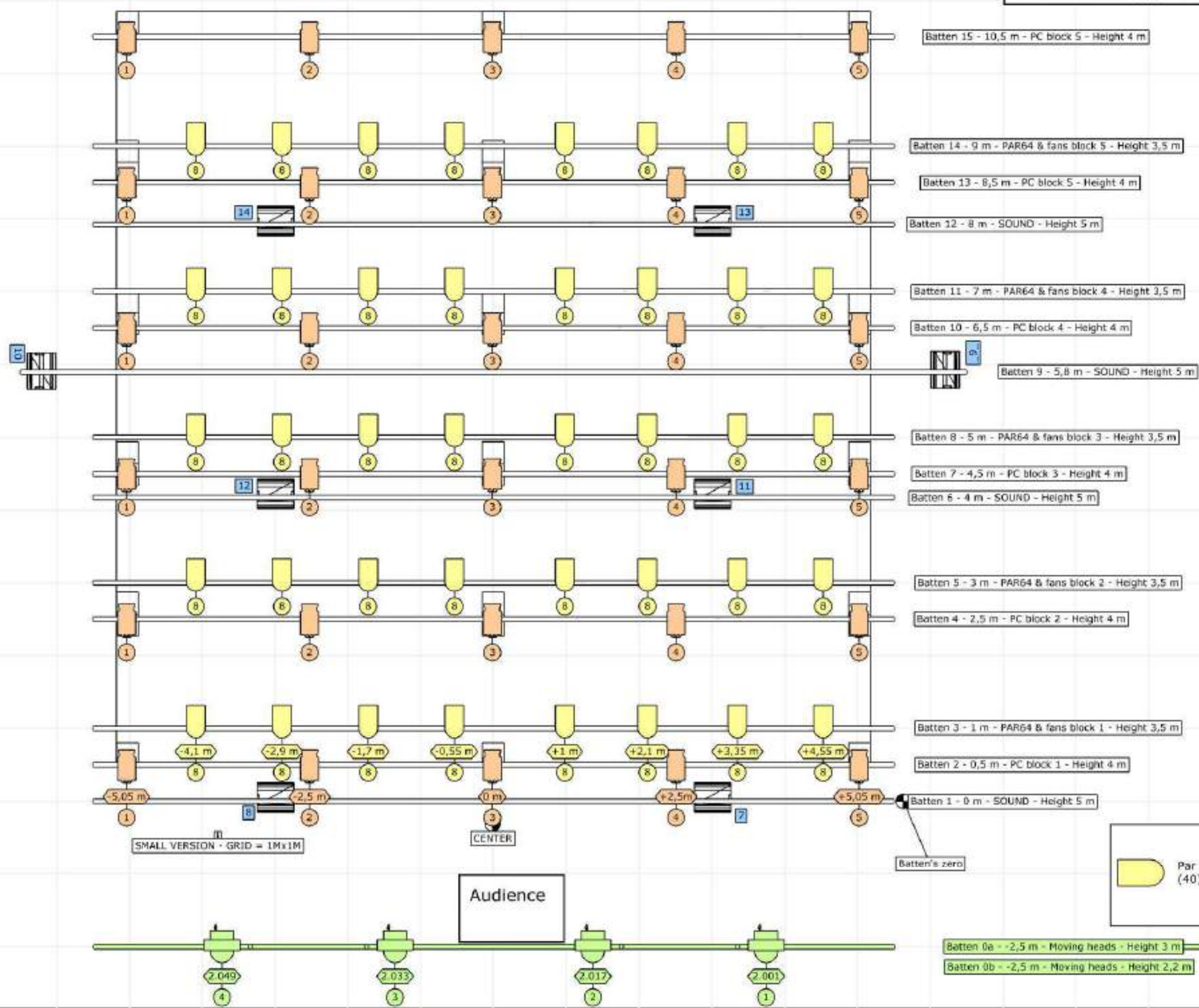
Back of the stage

Projet:
JE SUIS UNE MONTAGNE - Eric Amal-Burtschy

Lieu du projet et version:
TECHNICAL SETUP - V4

Directeur technique:
C. VAN HOVE - cvanhove.regie@me.com - +32 476 71 04 72





Hanging of fans and relay pack 230V on PAR64 battens.

Projet: JE SUIS UNE MONTAGNE - Eric Arnal-Burtschy

Lieu du projet et version

TECHNICAL SETUP - V4

Directeur technique :

C. VAN HOVE - cvanhove.regie@me.com - +32 476 71 04 72



- 1 :
- control booth assembling
 - check lighting pre-setup and patch
 - check sound pre-setup and patch
- 2 :
- PC projectors setup
 - speakers setup

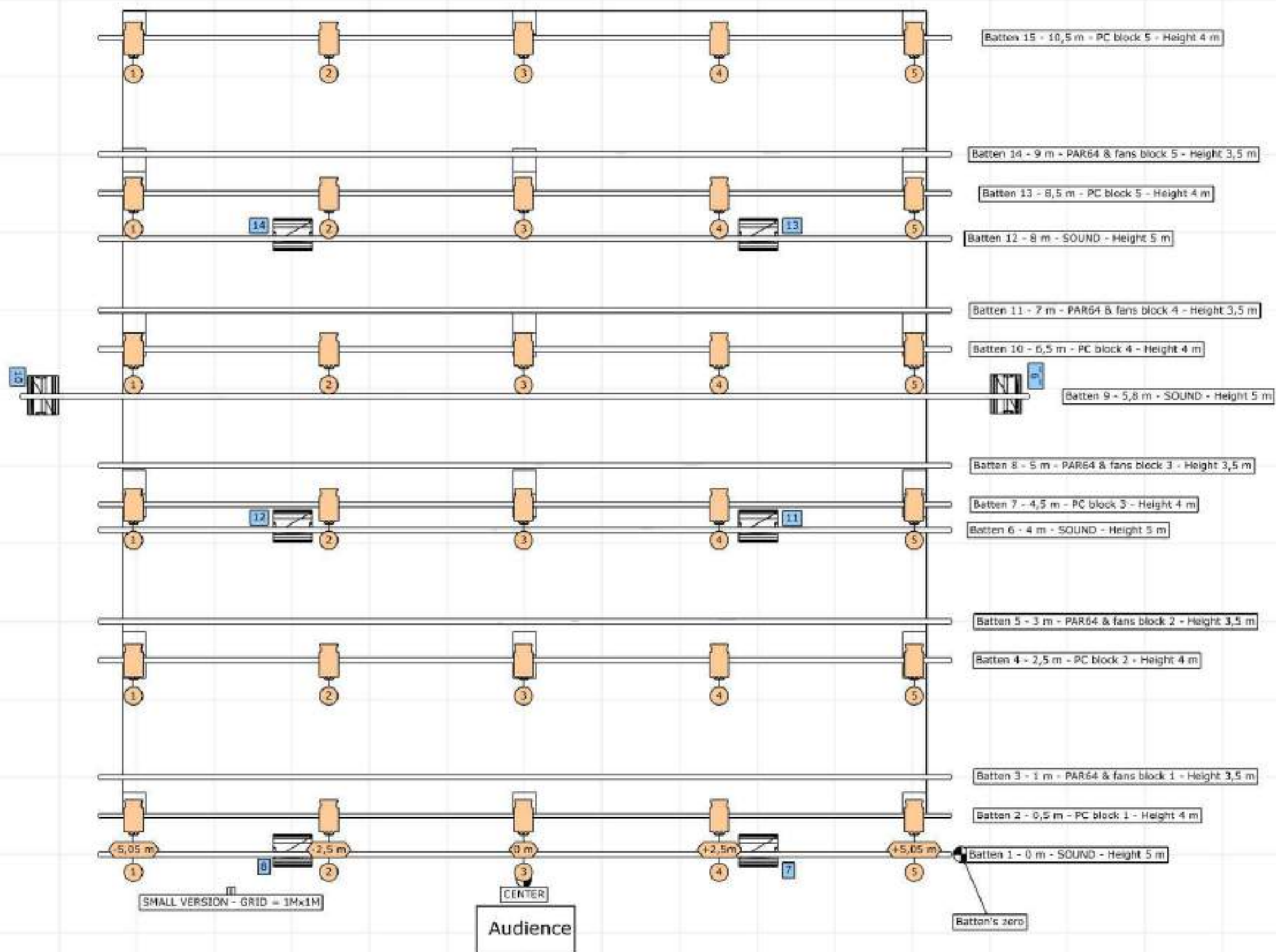
Projet :
JE SUIS UNE MONTAGNE - Eric Arnal-Burtschy

Lieu du projet et version :
TECHNICAL SETUP - V4

Directeur technique :
C. VAN HOVE - cvanhove.regie@me.com - +32 476 71 04 72

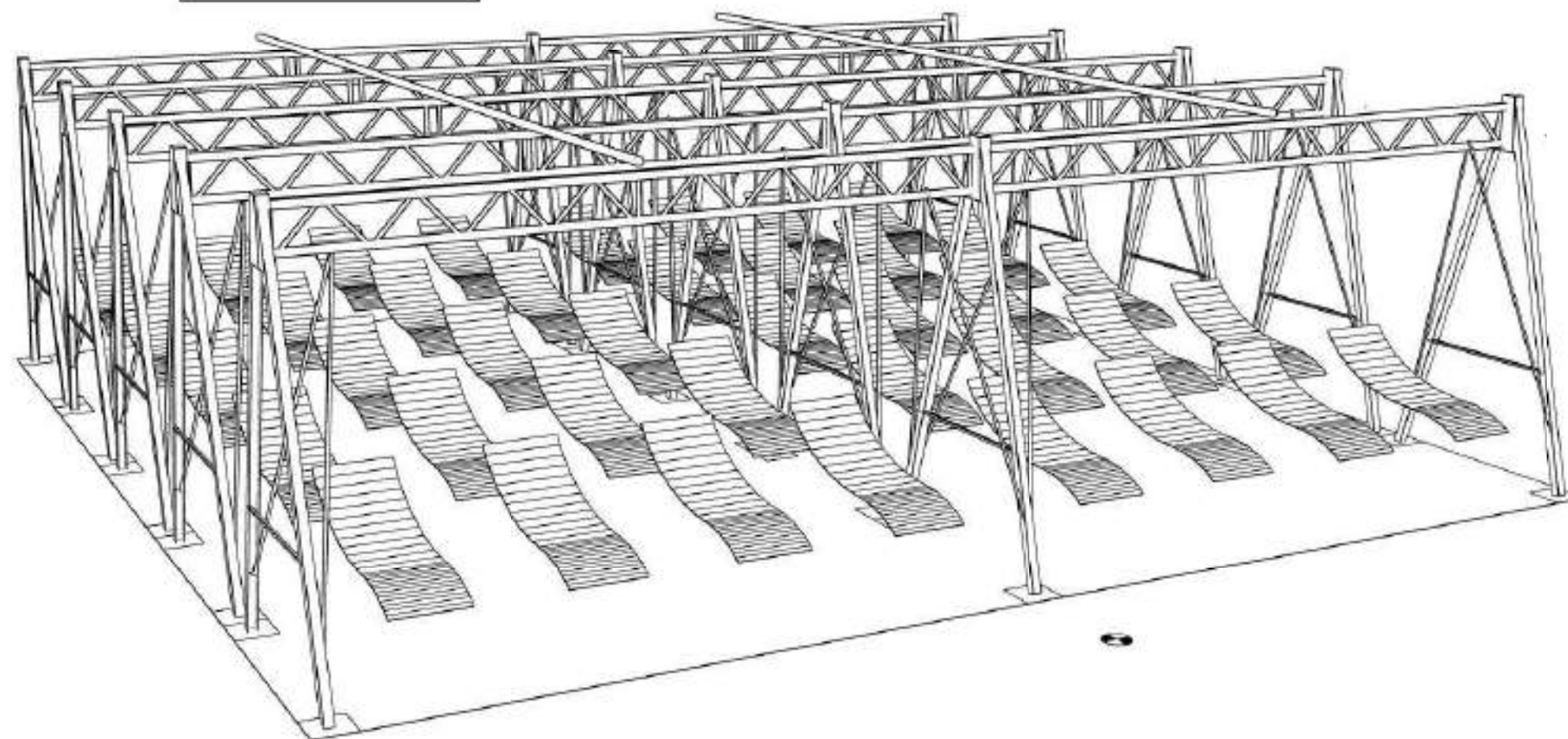


Back of the stage



General view. Self-standing structure, no fixation in the ground. It is made of 5 identical blocks held together by aluminium battens and double clamps (Doughty type).

Back of the stage



Audience



Structures
assembling

STEP 4

Back of the stage

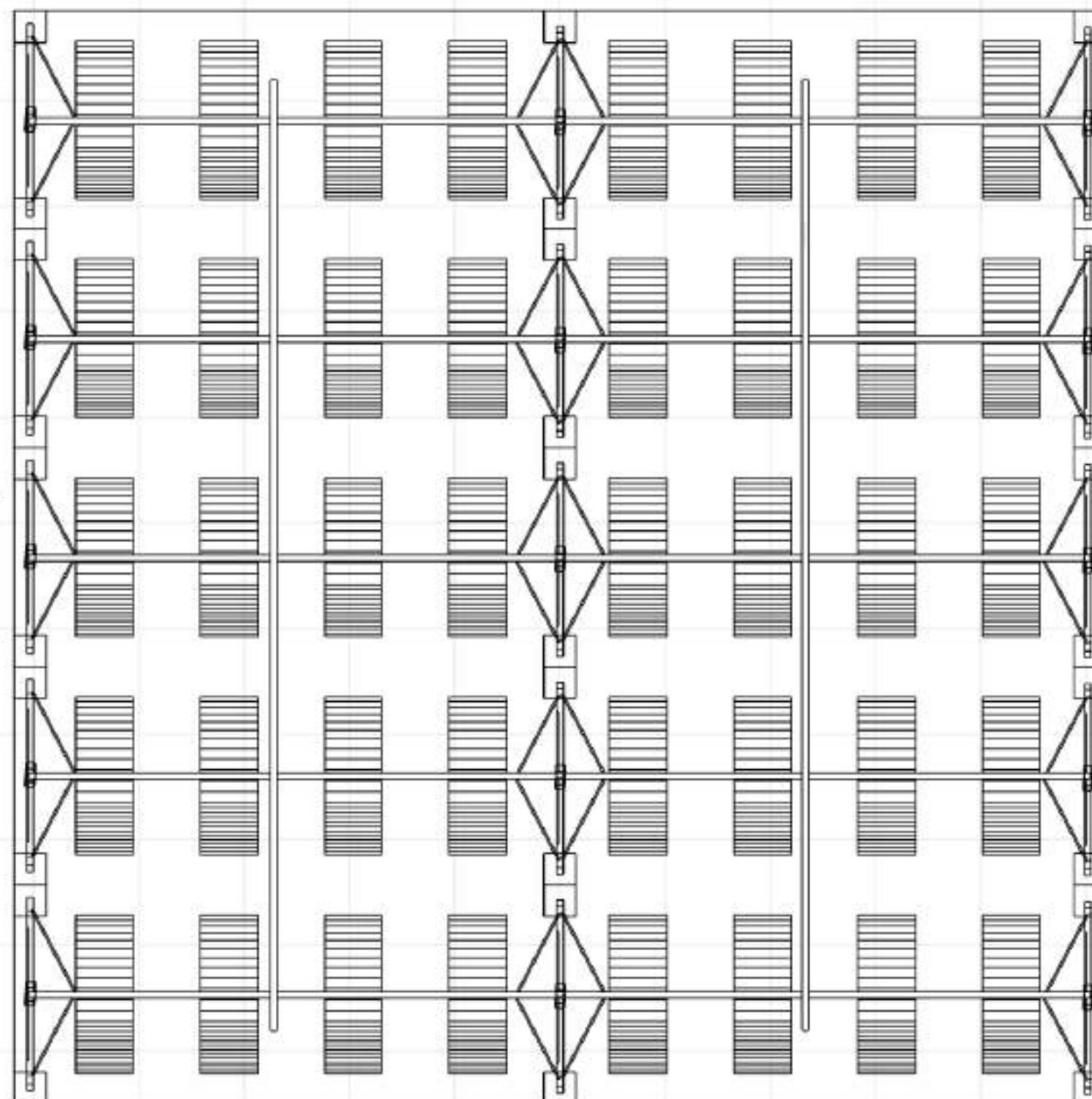
Projet
JE SUIS UNE MONTAGNE - Eric Amal-Burtschy

Lieu du projet et version
TECHNICAL SETUP - V4

Directeur technique
C. VAN HOVE - cvanhove.regie@me.com - +32 476 71 04 72

Top view

Structure side
dimension: 10,35
m (minimal
dimension)



Structure width : 10,44 m (minimal dimension)

SMALL VERSION - GRID = 1Mx1M

CENTER

Gradins

Batten's zero

Step 5

Moving heads setup

Top view

Stage

Project:
JE SUIS UNE MONTAGNE - Eric Amal-Burtschy

Logo du projet et version:
TECHNICAL SETUP - V4

Directeur technique:
C. VAN HOVE - cvanhove.regie@me.com - +32 476 71 04 72



SMALL VERSION - GRID = 1Mx1M

CENTER

Batten 2 - 0,5 m - PC block 1 - Height 4 m

Batten 1 - 0 m - SOUND - Height 5 m

Batten's zero

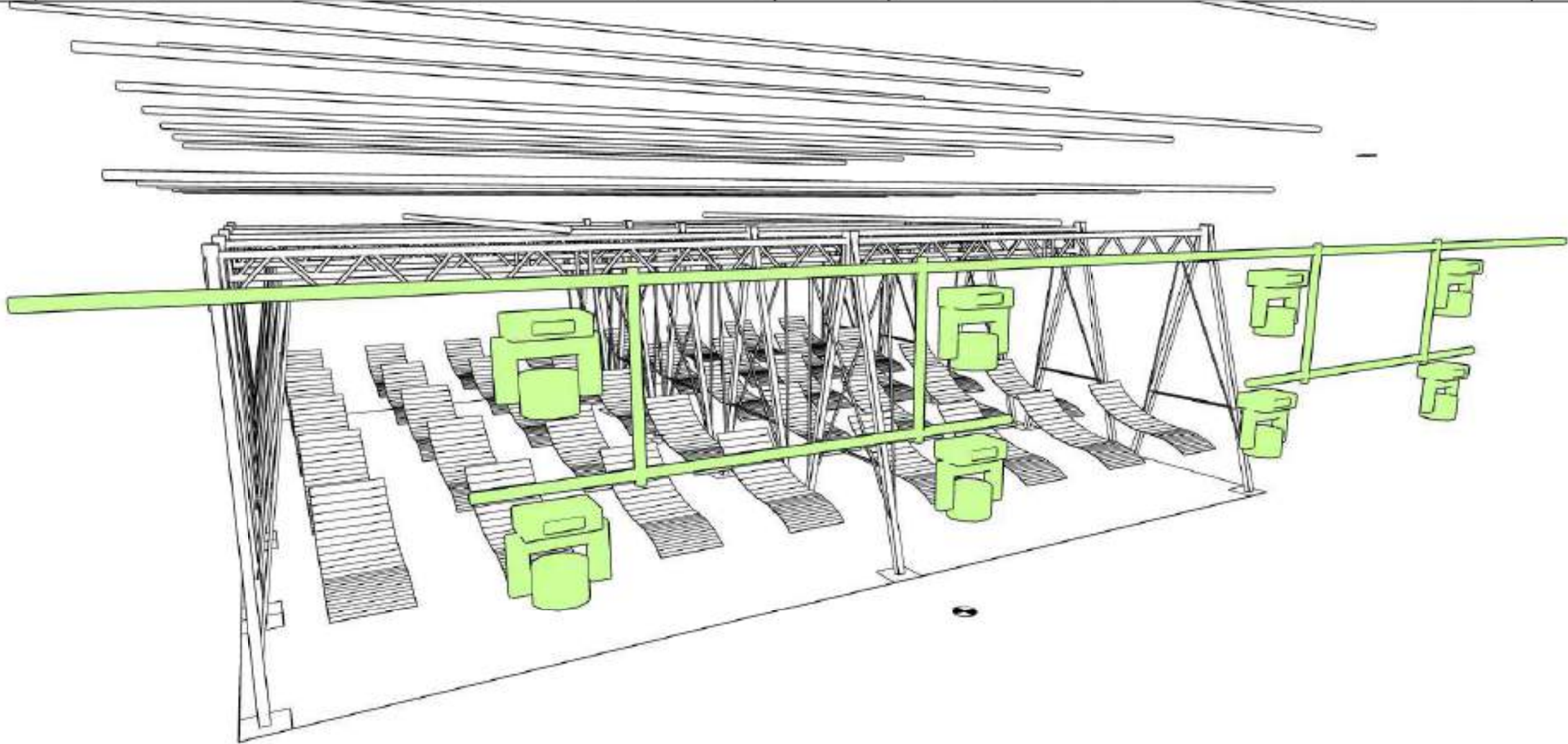
Project's provided moving heads placed on two different heights

Batten 0a - -2,5 m - Moving heads - Height 3 m

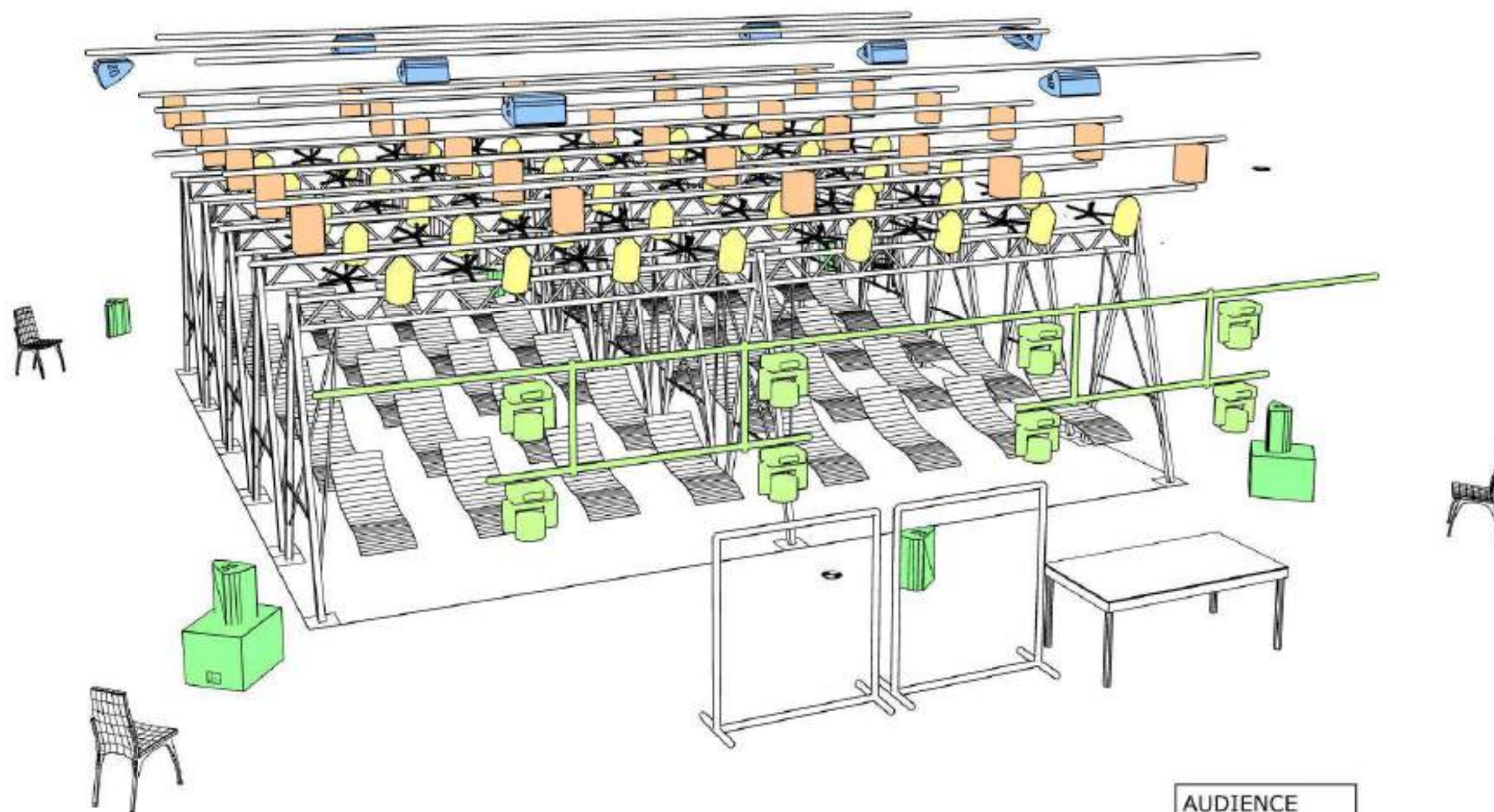
Batten 0b - -2,5 m - Moving heads - Height 2,2 m

Eurolite LED TMH-X4
Zoom Wash (8)

Audience

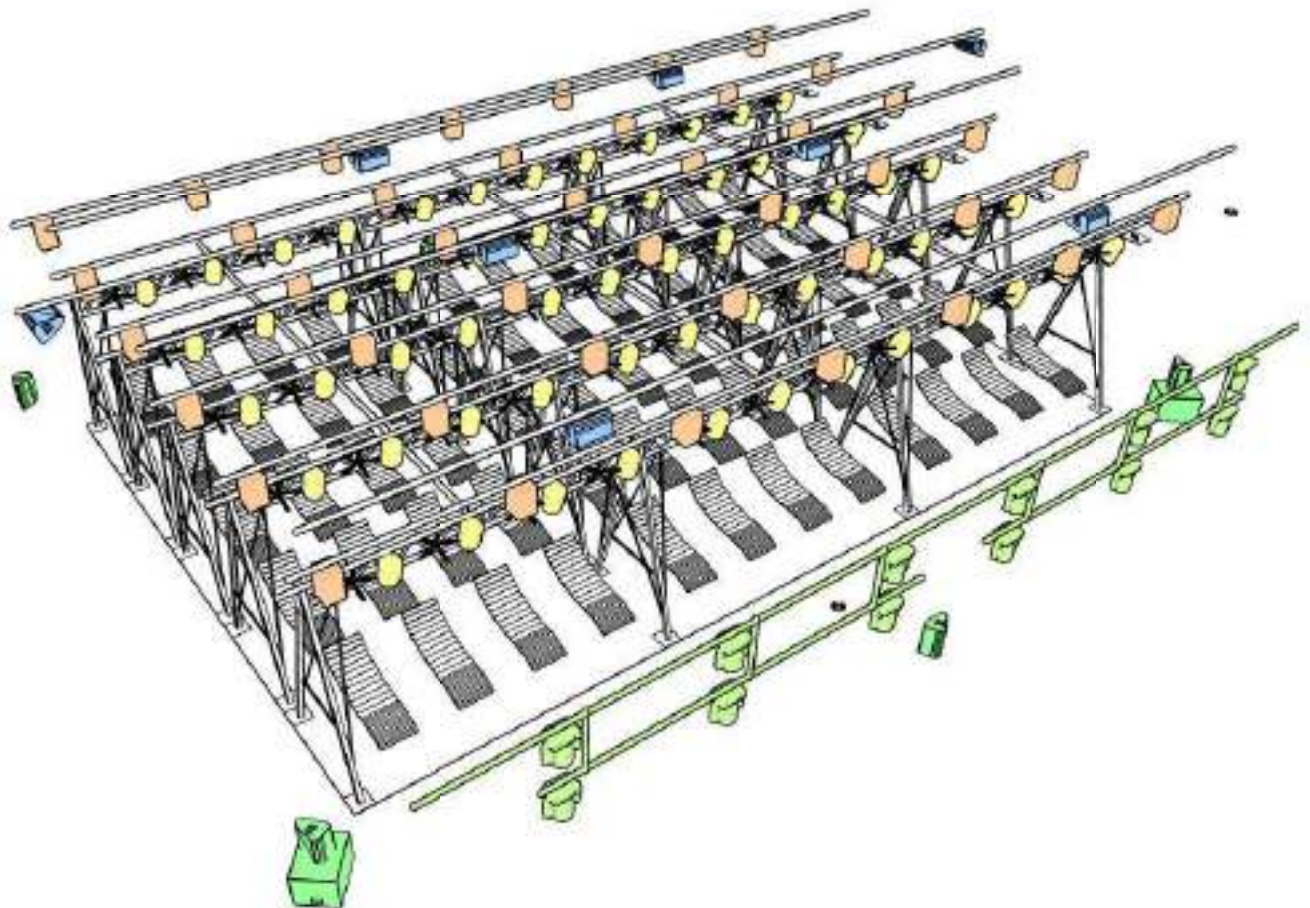


Projet	JE SUIS UNE MONTAGNE - Eric Arnal-Burtschy
Lieu du projet et version	TECHNICAL SETUP - V4
Directeur technique :	C. VAN HOVE - cvanhove.regie@me.com - +32 476 71 04 72



AUDIENCE

Setup plan



Large version 60 seats

Minimal stage dimensions :
15,50 m (width) x 10,35 m (depth)
(structure dimension)

16 m batters width

Optimal dimensions :
18 m (width) x 13 m (depth)

Projet	JE SUIS UNE MONTAGNE - Eric Arnal-Burtschy
Nom du projet et version	TECHNICAL SETUP - V4
Directeur technique	C. VAN HOVE - cvanhove.regie@me.com - +32 476 71 04 72



General plan of the setup - Battens and floor

Back of the stage

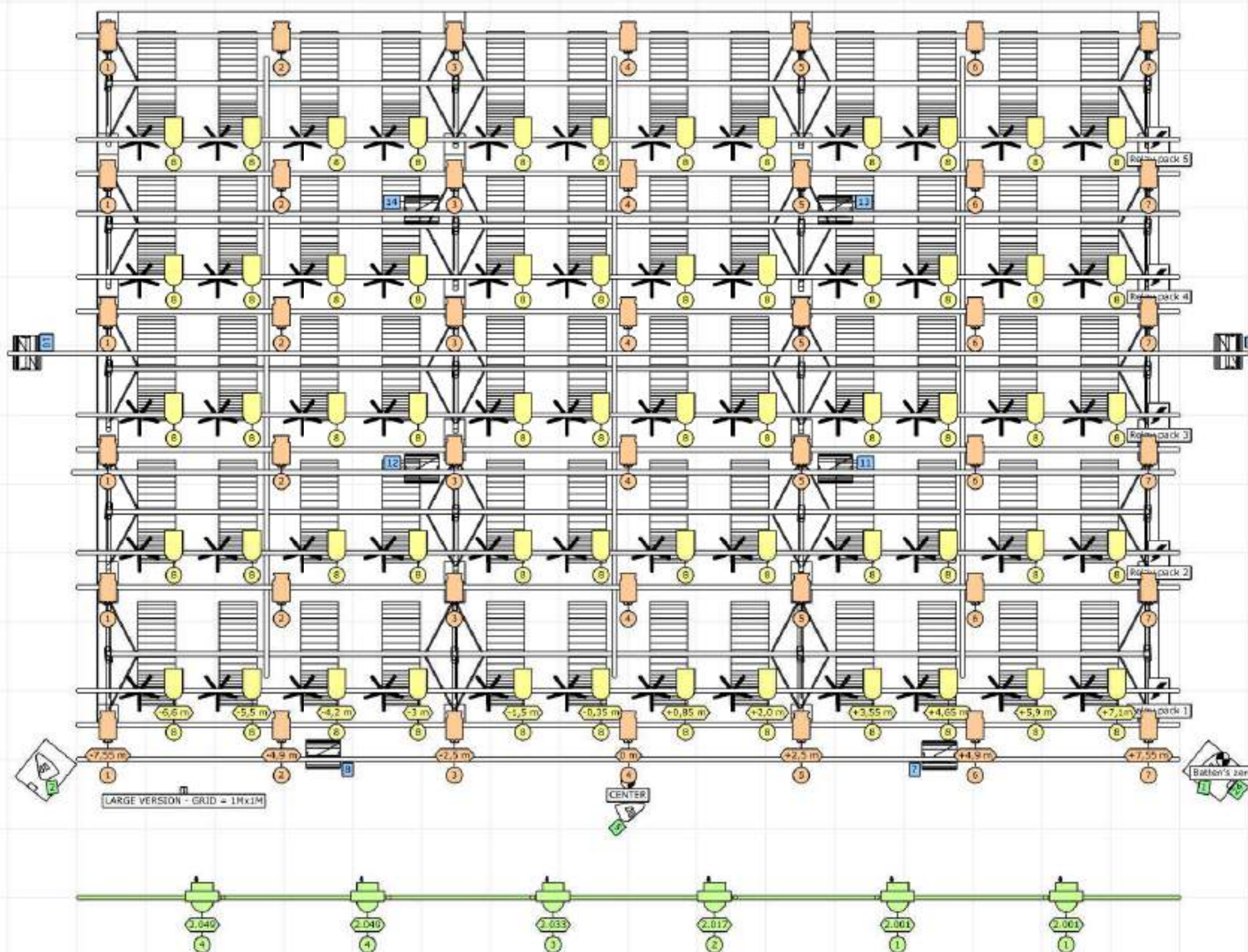
Projet: JE SUIS UNE MONTAGNE - Eric Amal-Burtschy

Lieu du projet et version:

TECHNICAL SETUP - V4

Directeur technique:

C. VAN HOVE - cvanhove.regie@me.com - +32 476 71 04 72



Batten 15 - 10,5 m - PC block 6 - Height 4 m

Batten 14 - 9 m - PAR64 & fans block 5 - Height 3,5 m

Batten 13 - 8,5 m - PC block 5 - Height 4 m

Batten 12 - 8 m - SOUND - Height 5 m

Batten 11 - 7 m - PAR64 & fans block 4 - Height 3,5 m

Batten 10 - 6,5 m - PC block 4 - Height 4 m

Batten 9 - 5,5 m - SOUND - Height 5 m

Batten 8 - 5 m - PAR64 & fans block 3 - Height 3,5 m

Batten 7 - 4,5 m - PC block 3 - Height 4 m

Batten 6 - 4 m - SOUND - Height 5 m

Batten 5 - 3 m - PAR64 & fans block 2 - Height 3,5 m

Batten 4 - 2,5 m - PC block 2 - Height 4 m

Batten 3 - 1 m - PAR64 & fans block 1 - Height 3,5 m

Batten 2 - 0,5 m - PC block 1 - Height 4 m

Batten 1 - 0 m - SOUND - Height 5 m

Batten 0a - -2,5 m - Moving Heads - Height 3 m

Batten 0b - -2,5 m - Moving Heads - Height 2,2 m

Audience

Sectional plan

Projet: JE SUIS UNE MONTAGNE - Eric Arnal-Burtschy

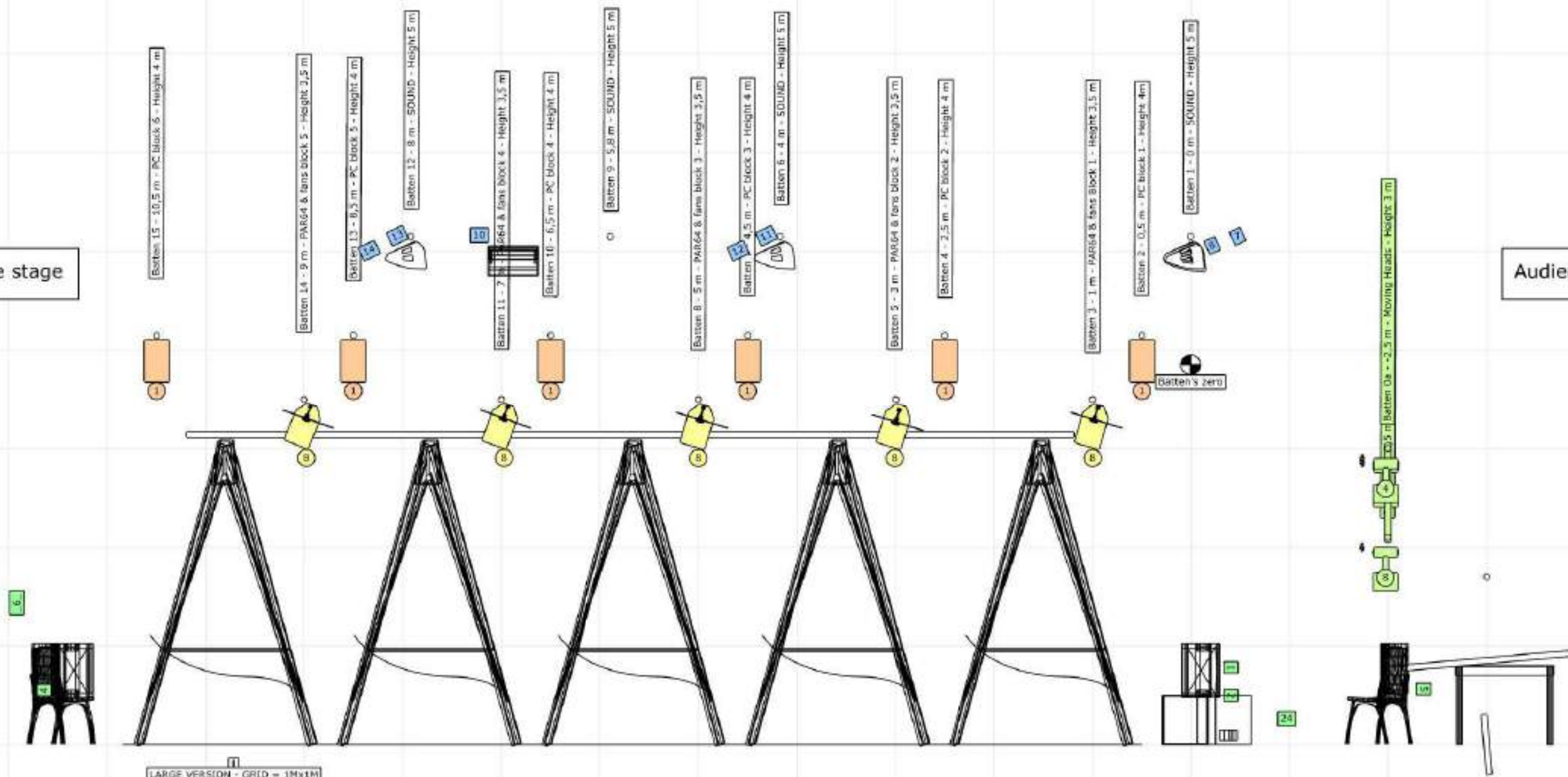
Lieu du projet et version: TECHNICAL SETUP - V4

Directeur technique: C. VAN HOVE - cvanhove.regie@me.com - +32 476 71 04 72



Back of the stage

Audience



Par 64 (60) PC 1kw (42)

Sound setup

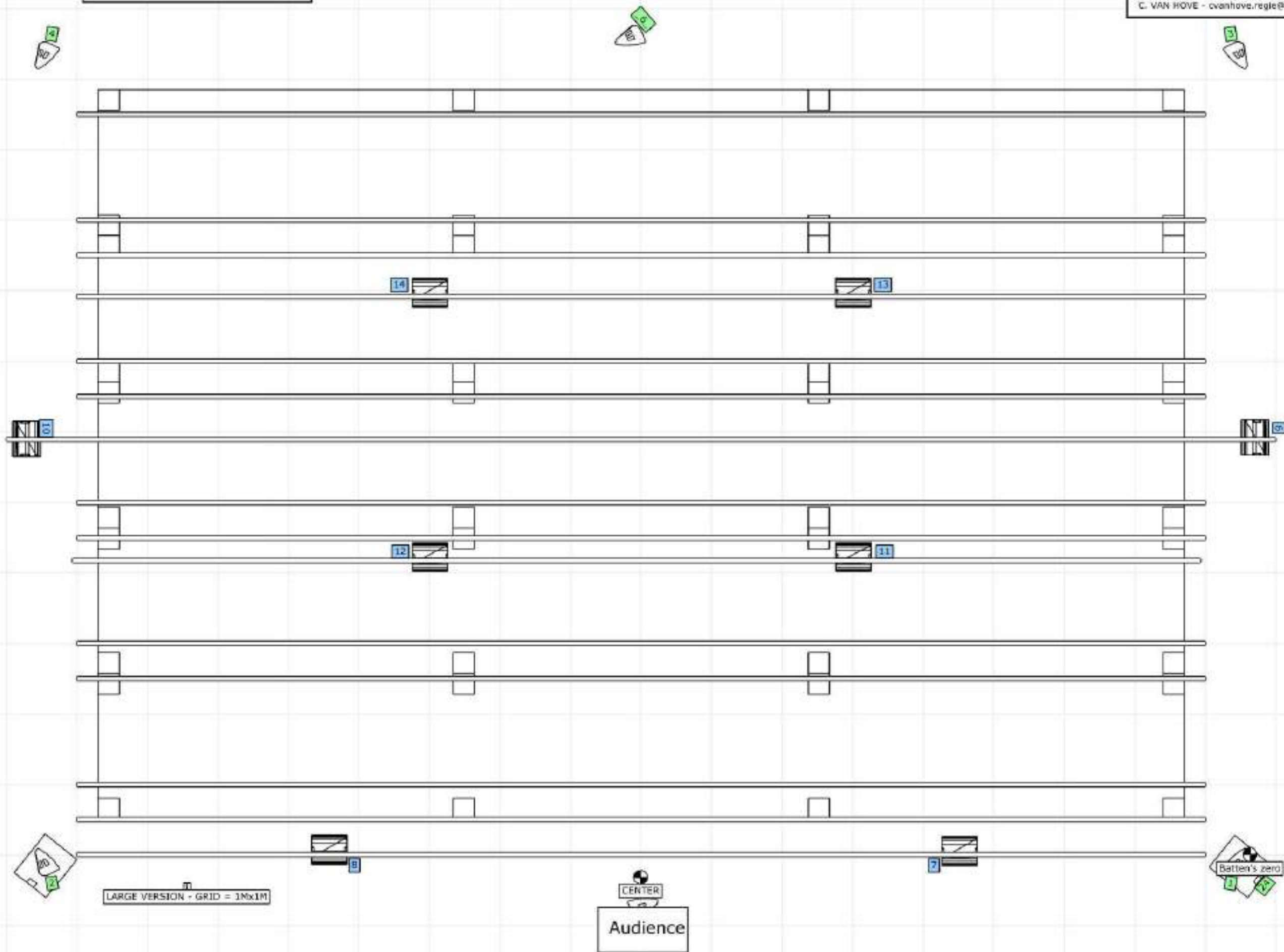
Floor speakers - Green labels
Hanged speakers - Blue labels

Back of the stage

Projet:
JE SUIS UNE MONTAGNE - Eric Amal-Burtschy

Lieu du projet et version:
TECHNICAL SETUP - V4

Directeur technique:
C. VAN HOVE - cvanhove.regie@me.com - +32 476 71 04 72



Batten 15 - 10,5 m - PC block 6 - Height 4 m

Batten 14 - 9 m - PAR64 & fans block 5 - Height 4 m

Batten 13 - 8,5 m - PC block 5 - Height 4 m

Batten 12 - 8 m - SOUND - Height 5 m

Batten 11 - 7 m - PAR64 & fans block 4 - Height 4 m

Batten 10 - 6,5 m - PC block 4 - Height 4 m

Batten 9 - 5,8 m - SOUND - Height 5 m

Batten 8 - 5 m - PAR64 & fans block 3 - Height 4 m

Batten 7 - 4,5 m - PC block 3 - Height 4 m

Batten 6 - 4 m - SOUND - Height 5 m

Batten 5 - 3 m - PAR64 & fans block 2 - Height 4 m

Batten 4 - 2,5 m - PC block 2 - Height 4 m

Batten 3 - 1 m - PAR64 & fans Block 1 - Height 4 m

Batten 2 - 0,5 m - PC block 1 - Height 4m

Batten 1 - 0 m - SOUND - Height 5 m

LARGE VERSION - GRID = 1Mx1M

CENTER
Audience

Batten's zero

Battens plan

Step 1

Back of the stage

Hanging PCs and SOUND on battens

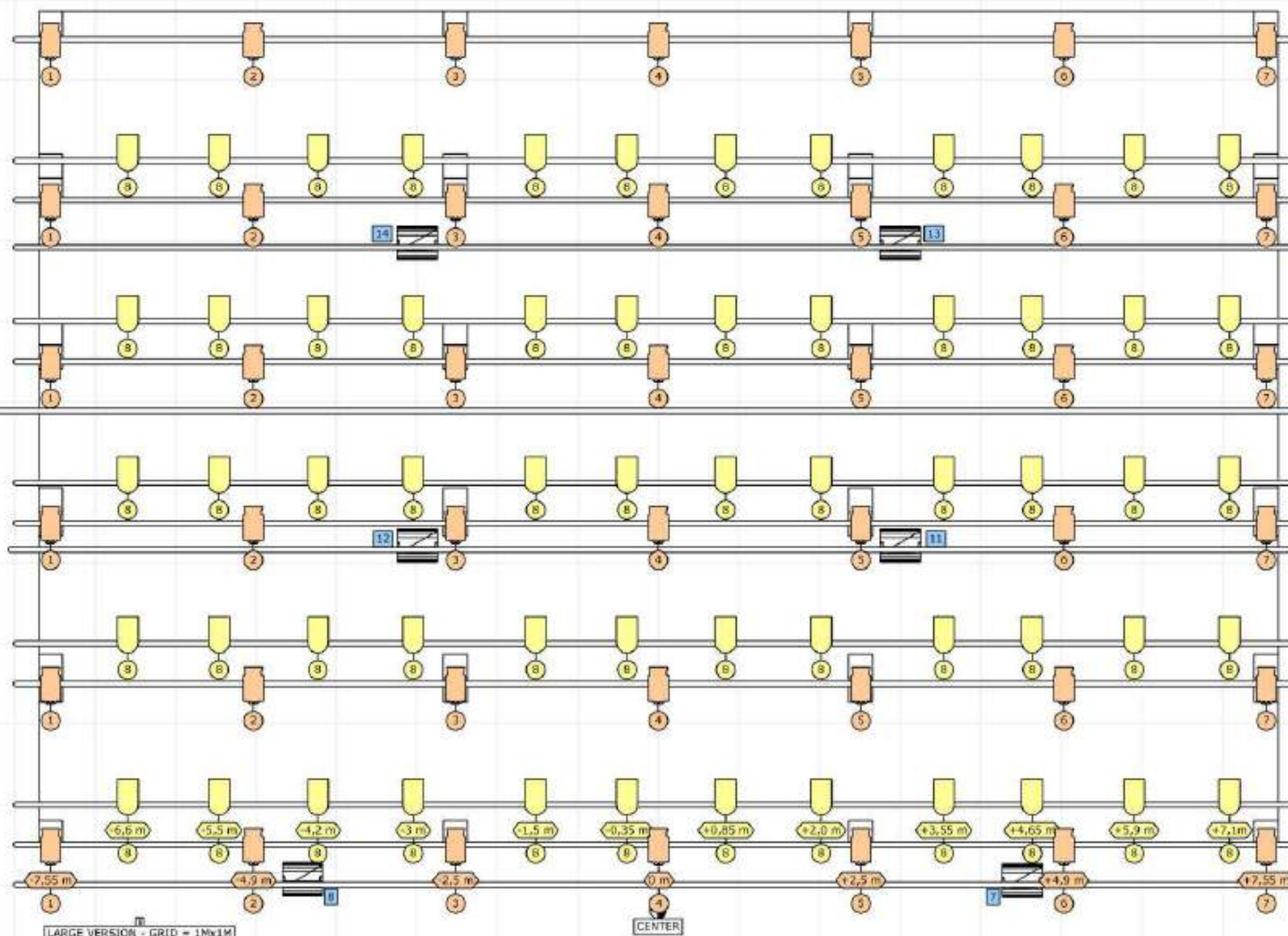
Projet
JE SUIS UNE MONTAGNE - Eric Arnal-Burtschy

Lieu du projet et version

TECHNICAL SETUP - V4

Directeur technique

C. VAN HOVE - cvanhove.regie@me.com - +32 476 71 04 72



Batten 15 - 10,5 m - PC block 6 - Height 4 m

Batten 14 - 9 m - PAR64 & fans block 5 - Height 3,5 m

Batten 13 - 6,5 m - PC block 5 - Height 4 m

Batten 12 - 8 m - SOUND - Height 5 m

Batten 11 - 7 m - PAR64 & fans block 4 - Height 3,5 m

Batten 10 - 6,5 m - PC block 4 - Height 4 m

Batten 9 - 5,8 m - SOUND - Height 5 m

Batten 8 - 5 m - PAR64 & fans block 3 - Height 3,5 m

Batten 7 - 4,5 m - PC block 3 - Height 4 m

Batten 6 - 4 m - SOUND - Height 5 m

Batten 5 - 3 m - PAR64 & fans block 2 - Height 3,5 m

Batten 4 - 2,5 m - PC block 2 - Height 4 m

Batten 3 - 1 m - PAR64 & fans Block 1 - Height 3,5 m

Batten 2 - 0,5 m - PC block 1 - Height 4m

Batten 1 - 0 m - SOUND - Height 5 m

Batten 0a - -2

Batten 0b - -2,5 m - Moving Heads - Height 2,2 m

Audience

Battens view

Step 2

Back of the stage

Hanging of fans and relay pack 230V on PAR64 battens.

Projet: JE SUIS UNE MONTAGNE - Eric Arnal-Burtschy

Lieu du projet et version:

TECHNICAL SETUP - V4

Directeur technique:

C. VAN HOVE - cvanhove.regie@me.com - +32 476 71 04 72



Batten 15 - 10,5 m - PC block 6 - Height 5 m

Batten 14 - 9 m - PAR64 & fans block 5

Batten 13 - 8,5 m - PC block 5 - Height 5 m

Batten 12 - 8 m - SOUND - Height 5 m

Batten 11 - 7 m - PAR64 & fans block 4

Batten 10 - 6,5 m - PC block 4 - Height 5 m

Batten 9 - 5,8 m - SOUND - Height 5 m

Batten 8 - 5 m - PAR64 & fans block 3

Batten 7 - 4,5 m - PC block 3 - Height 4 m

Batten 6 - 4 m - SOUND - Height 5 m

Batten 5 - 3 m - PAR64 & fans block 2

Batten 4 - 2,5 m - PC block 2 - Height 4 m

Batten 3 - 1 m - PAR64 & fans Block 1

Batten 2 - 0,5 m - PC block 1 - Height 4 m

Batten 1 - 0 m - SOUND - Height 5 m

Batten's zero

LARGE VERSION - GRID = 1Mx1M

CENTER

Audience

Fans 120W (60)

Battens view

Step 3

- 1 :
- control booth assembling
 - check lighting pre-setup and patch
 - check sound pre-setup and patch
- 2 :
- PC projectors setup
 - speakers setup

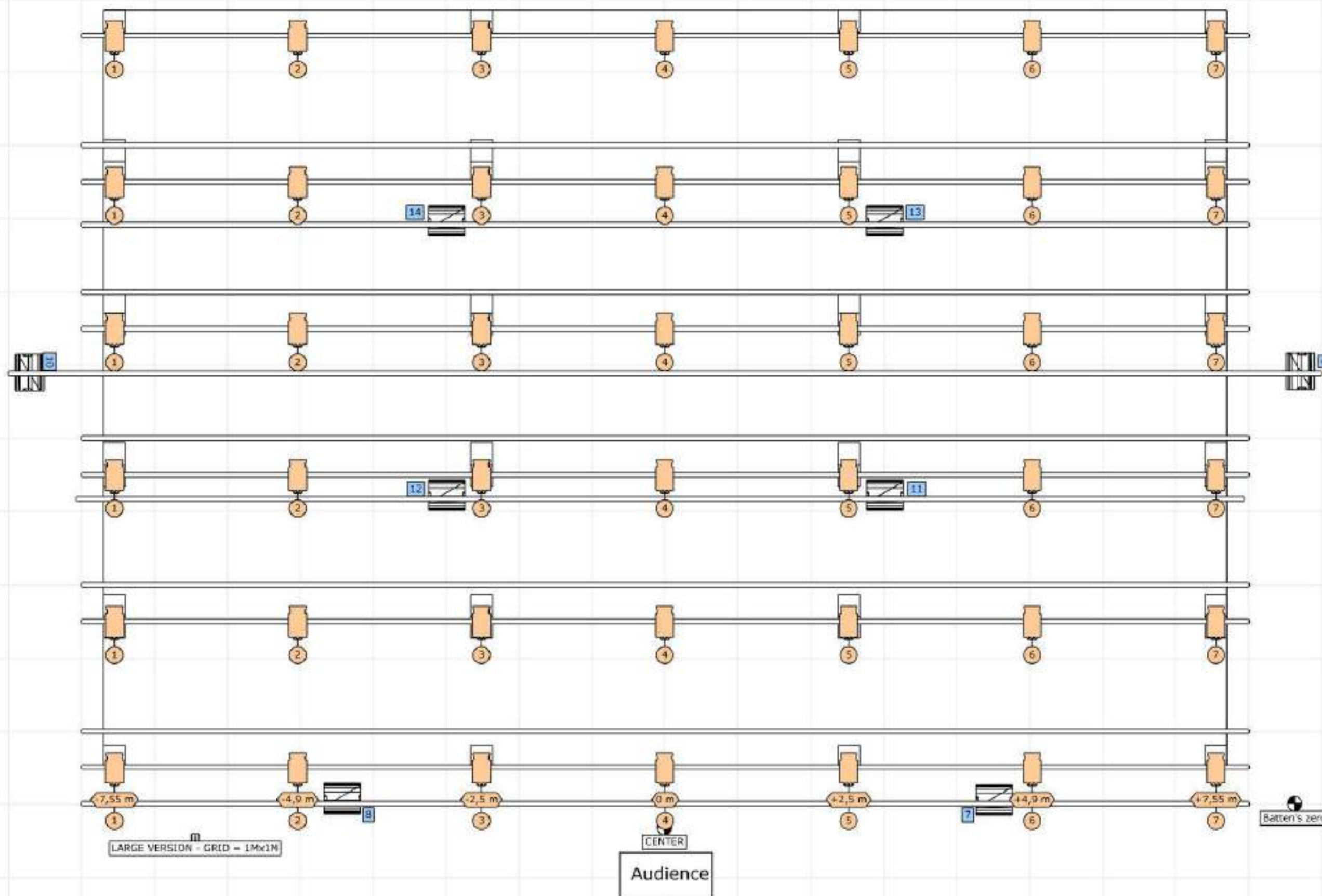
Projet:
JE SUIS UNE MONTAGNE - Eric Amal-Burtschy

Lieu du projet et version:
TECHNICAL SETUP - V4

Directeur technique:
C. VAN HOVE - cvanhove.regie@me.com - +32 476 71 04 72



Back of the



Batten 15 - 10,5 m - PC block 6 - Height 4 m

Batten 14 - 9 m - PAR64 & fans block 5 - Height 4 m

Batten 13 - 8,5 m - PC block 5 - Height 4 m

Batten 12 - 8 m - SOUND - Height 5 m

Batten 11 - 7 m - PAR64 & fans block 4 - Height 4 m

Batten 10 - 6,5 m - PC block 4 - Height 4 m

Batten 9 - 5,8 m - SOUND - Height 5 m

Batten 8 - 5 m - PAR64 & fans block 3 - Height 4 m

Batten 7 - 4,5 m - PC block 3 - Height 4 m

Batten 6 - 4 m - SOUND - Height 5 m

Batten 5 - 3 m - PAR64 & fans block 2 - Height 4 m

Batten 4 - 2,5 m - PC block 2 - Height 4 m

Batten 3 - 1 m - PAR64 & fans Block 1 - Height 4 m

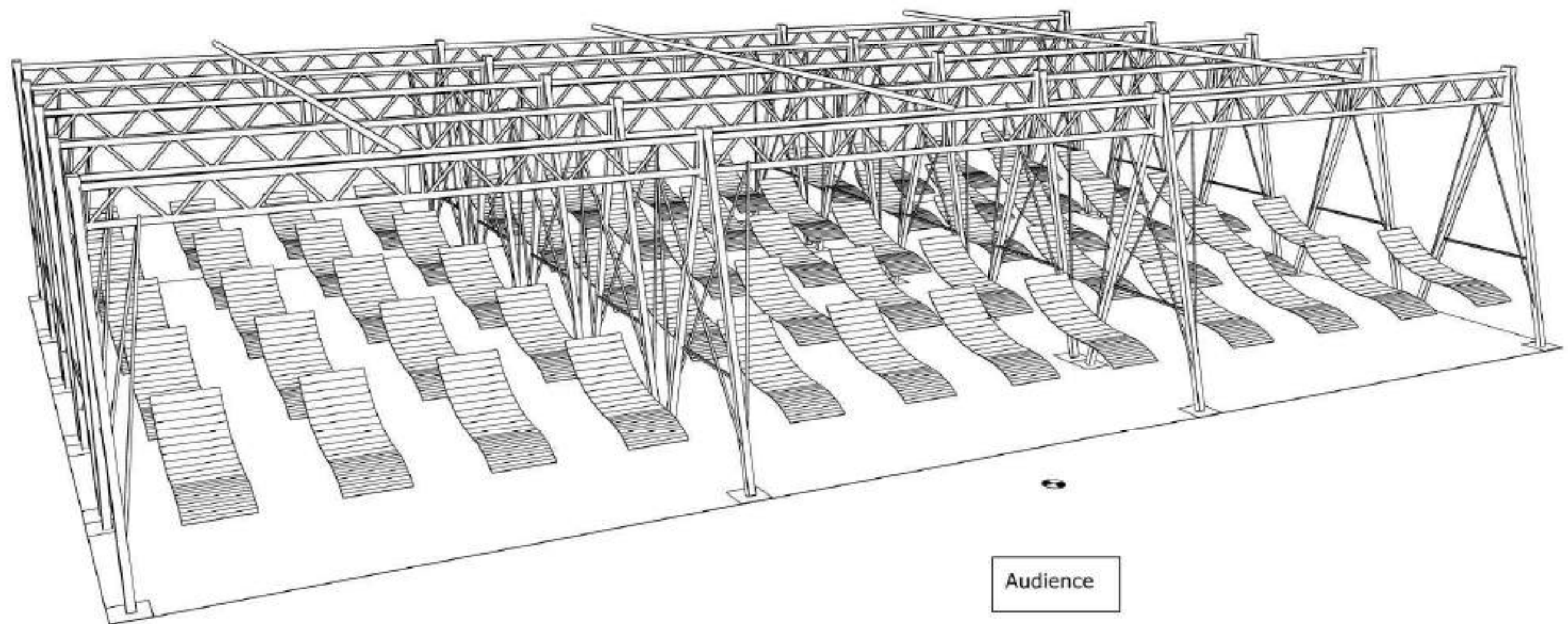
Batten 2 - 0,5 m - PC block 1 - Height 4m

Batten 1 - 0 m - SOUND - Height 5 m

Batten's zero

General view. Self-standing structure, no fixation in the ground. It is made of 5 identical blocks held together by aluminium battens and double clamps (Doughty type).

Back of the stage



Audience

Structures
assembling

STEP 4

Back of the stage

Top view

Projet
JE SUIS UNE MONTAGNE - Eric Amal-Burtschy

Lieu du projet et voisins

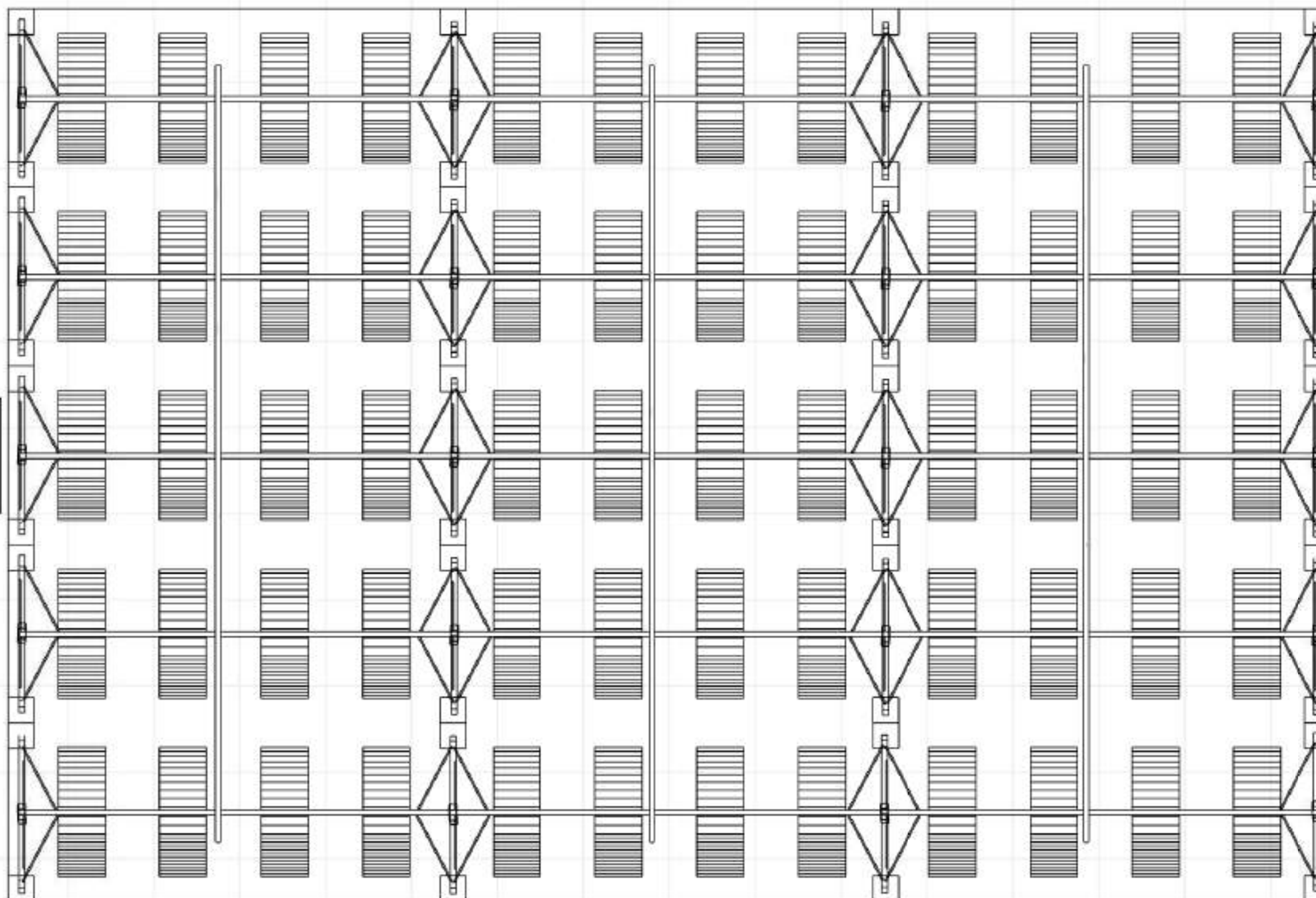
TECHNICAL SETUP - V4

Directeur technique :

C. VAN HOVE - cvanhove.regie@me.com - +32 476 71 04 72



Structure side
dimension: 10,35
m (minimal
dimension)



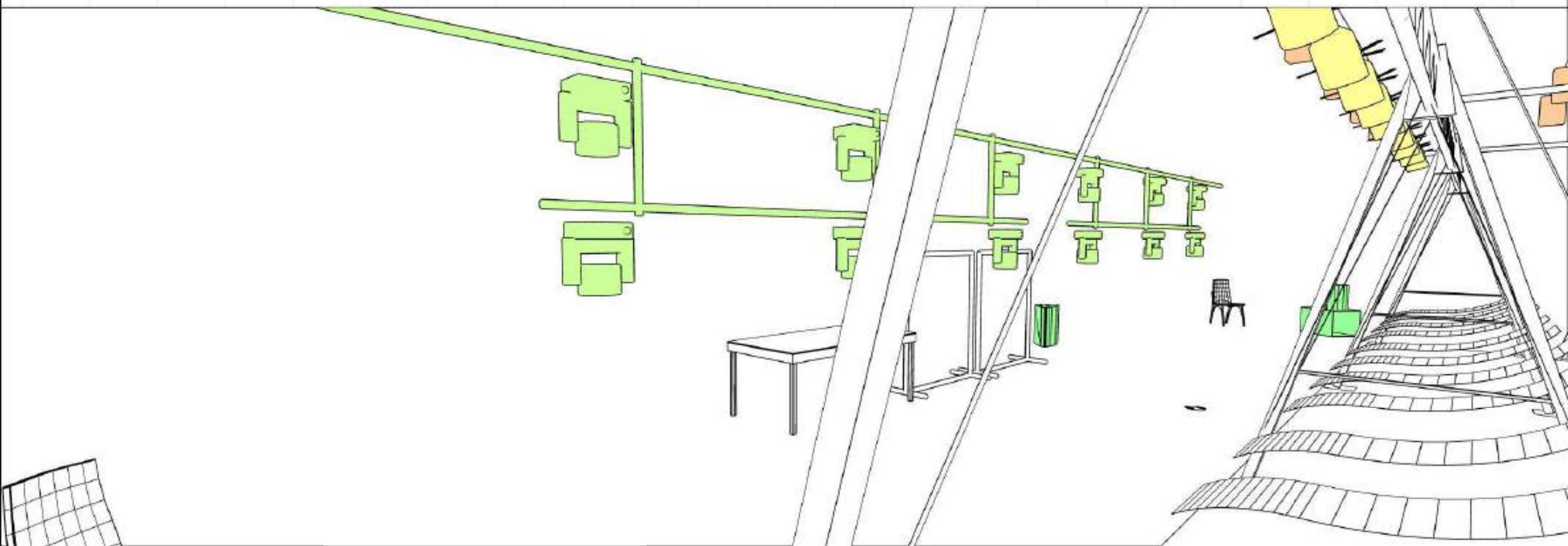
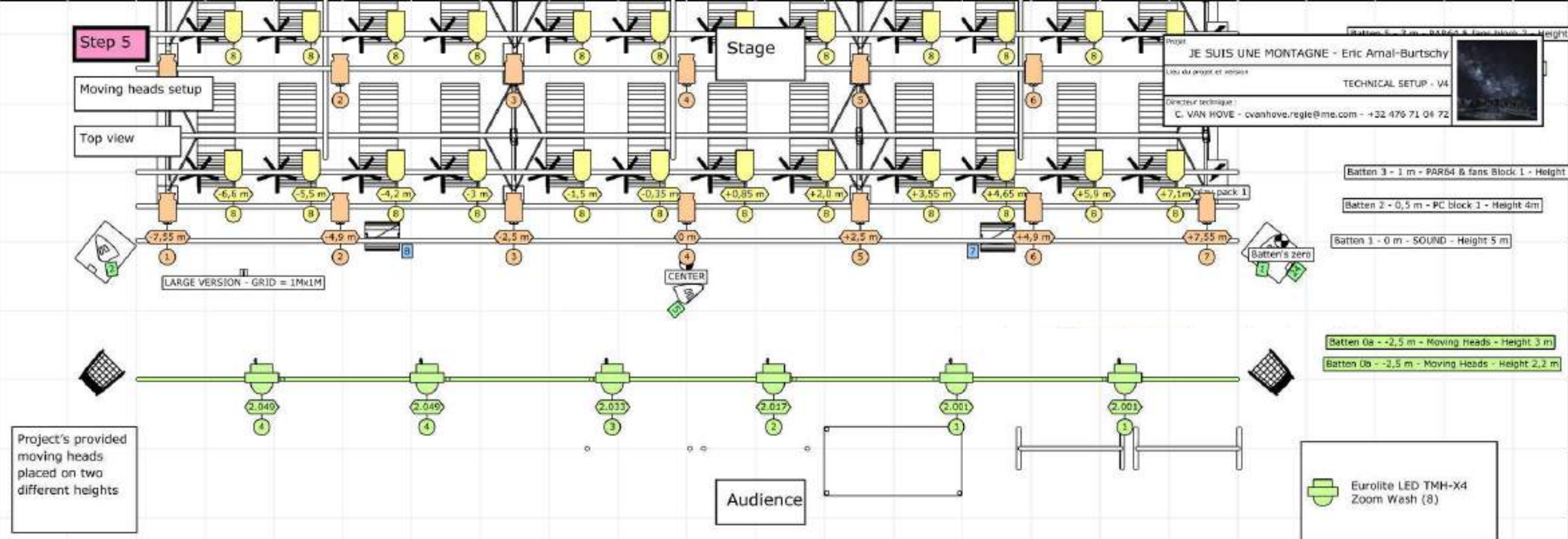
Structure width : 15,50 m (minimal dimension)

LARGE VERSION - GRID = 3Mx1M



Audience





Projet	JE SUIS UNE MONTAGNE - Eric Arnal-Burtschy
Lieu du projet et version	TECHNICAL SETUP - V4
Directeur technique :	C. VAN HOVE - cvanhove.regie@me.com - +32 476 71 04 72

